



THE
PRODUCTION
COMPANY

SEASON 2013
CELEBRATING 15 YEARS



GYPSY

ARTS CENTRE MELBOURNE, STATE THEATRE



THE PRODUCTION COMPANY

THE PRODUCTION COMPANY
GRATEFULLY APPRECIATES



PRESENTING SPONSORS



SERIES SPONSORS



SUPPORTING SPONSORS



DOMAIN FLOWERS



OUR FOUNDATION SPONSORS

- Kevin and Colleen Bamford
- John and Janet Calvert-Jones
- Campbell and Krystyna Campbell-Pretty
- Henry and Esther Goldberg
- Gil and Sandi Hoskins
- Garry Krauss AM and Pru Krauss
- Bill and Elaine Montague
- Ray Montague
- Michael and Atida Naphtali & Andrew Fairley
- Dr Tim and Mrs Trish Pitt
- Lady Potter AC
- Tom and Robyn Warwick
- Anonymous (2)

THE PRODUCTION COMPANY

PRESENTS

CAROLINE O'CONNOR

IN

GYPSY

A MUSICAL FABLE

BOOK BY

ARTHUR LAURENTS

MUSIC BY

JULE STYNE

LYRICS BY

STEPHEN SONDHEIM

Suggested by memoirs of Gypsy Rose Lee

Original production by David Merrick and Leland Hayward. Entire production originally directed and choreographed by Jerome Robbins.

MATT HETHERINGTON • CHRISTINA TAN • GEMMA-ASHLEY KAPLAN
NATHAN PINNELL • CHLOE DALLIMORE • NICKI WENDT • ANNE WOOD
FRANK GARFIELD • GLEN HOGSTROM

WITH

ZOE COPPINGER • MARK HILL • MATT HOLLY • EMILY LANGRIDGE
LIAM MCILWAIN • JESSIE PHILLIPS-LEE • DREW WESTON • BRENTON WILSON

AND

QUINN CAMERON • HATTIE HOOK • LUCILLE LE MELEDO • PARIS MAHAR
JACK BERGIN • JACK LYALL • LUKE TIERI • ANGELO VASILAKAKOS

DIRECTOR GALE EDWARDS

MUSICAL DIRECTOR GUY SIMPSON

CHOREOGRAPHER ANDREW HALLSWORTH

COSTUME DESIGNER TIM CHAPPEL SET DESIGNER ADAM GARDNIR

LIGHTING DESIGNERS PAUL JACKSON AND ROBERT CUDDON

SOUND DESIGN SYSTEM SOUND SOUND DESIGN ASSOCIATES JOHN SCANDRETT, MARK BENSON, DAVID TONION

STAGE MANAGER MEG DEYELL

ASSISTANT CHOREOGRAPHER NATALIE GILHOME ASSISTANT MUSICAL DIRECTOR CRAIG RENSHAW

ASSISTANT DIRECTOR EMMA CALLAGHAN

6 TO 14 JULY 2013 • ARTS CENTRE MELBOURNE, STATE THEATRE

PRESENTED BY ARRANGEMENT WITH TAMS-WITMARK MUSIC LIBRARY INC., 560 LEXINGTON AVENUE, NEW YORK, NEW YORK 10022





THE PRODUCTION COMPANY

Chairman: Jeanne Pratt AC
Artistic Director: Ken Mackenzie-Forbes AM
Executive Director: Rachel D Taylor

Hon. Company Secretary:	Don Maloney	Development Manager:	Simone Goodwin
Hon. Treasurer:	Keith Beecher OAM	Technical Director:	David Miller
Directors:	Deborah Beale Felicity Beale Mark Gogoll John Hay-Mackenzie Garry Krauss AM Ross Mollison	Marketing:	Kendra Reid, James Robertson www.aka-au.com
		Publicity by CAVANAGH PR:	Julie Cavanagh
		Graphic Design:	Studio Jack & aka Australia
PA to Jeanne Pratt AC:	Chris Gibbons		



Arts Centre Melbourne
PO Box 7585
St Kilda Road, Melbourne Vic 8004
Telephone: (03) 9281 8000
Facsimile: (03) 9281 8282
Website: www.artscentremelbourne.com.au

VICTORIAN ARTS CENTRE TRUST

Mr Tom Harley (President)
Ms Deborah Beale
Mr Sandy Clark
Mr Julian Clarke
Ms Catherine McClements
Mr Graham Smorgon AM
Mr David Vigo

EXECUTIVE GROUP

Ms Judith Isherwood, Chief Executive
Ms Jodie Bennett, Executive Corporate Services
Mr Tim Brinkman, Executive Performing Arts
Ms Louise Georgeson, General Manager
– Development, Corporate Communications & Special Events
Ms Sarah Hunt, General Manager
– Marketing and Audience Development
Mr Kyle Johnston, Executive Customer Enterprises.

Arts Centre Melbourne gratefully acknowledges the support of its donors through Arts Centre Melbourne Foundation Annual Giving Appeal.

FOR YOUR INFORMATION

- The management reserves the right to add, withdraw or substitute artists and to vary the program as necessary.
- The Trust reserves the right of refusing admission.
- Recording devices, cameras and mobile telephones must not be operated during the performance.
- In the interests of public health, Arts Centre Melbourne is a smoke-free area.

WELCOME TO GYPSY!

**With a book by Arthur Laurents, music by Jule Styne
and lyrics by Stephen Sondheim, 'What's not to like?'**

Caroline O'Connor was already a star when she performed in our first season in the title role of *Funny Girl*. Since then she has conquered Broadway and last month I had the great thrill of watching her bring down the house at the 2013 Tony Awards. When she performed in *GYPSY* in Britain, Caroline received rave reviews for her portrayal of Rose, the tyrannical stage mother. As someone who loves talent, I marvel at her phenomenal ability and that of her leading man, Matt Hetherington, who has performed the lead in seven of our musicals. What a coup it is to see three of our leading ladies, Chloe Dallimore, Nicki Wendt and Anne Wood, in the cameo roles of Tessie Tura, Mazeppa and Electra. I know you will be charmed and touched by the beauty and elegance of Christina Tan and Gemma-Ashley Kaplan as Louise and June and impressed by the skill and finesse of Nathan Pinnell as Tulsa.

We have certainly gathered a marvellous creative team to launch our fifteenth season and to enable this beautiful company to give us their best performances. Our Founding MD, Maestro Guy Simpson has been MD for eleven of our shows, Gale Edwards returned to us last year and her production of *CHESS* received a record seven Green Room Awards. Gale enjoys a brilliant reputation across a broad range of the performing arts. Andrew Hallsworth was one of the dancers in our first season of *GYPSY* and fifteen years later he is acknowledged as one of Australia's major creative talents in musical theatre. *GYPSY* is celebrated Costume Designer, Tim Chappel's first production with us and it is terrific to be welcoming back set designer Adam Gardnir. Our sound is in the capable and experienced hands of the team at System Sound and lighting design by Paul Jackson and Robert Cuddon.

We couldn't do this without the sponsors and donors gratefully listed in this program. Thank you. I want to thank also my unsung heroes Ken and Rachel, who, for the past fifteen years, have worked so hard to achieve our impressive results.

**CURTAIN UP, LIGHT THE LIGHTS
WE'VE GOT NOTHING TO HIT
BUT THE HEIGHTS!**



Jeanne Pratt AC
Chairman



A NOTE FROM THE DIRECTOR

I greatly enjoyed my time at The Production Company last year directing *CHESS*. So much so that I was keen to return this year - and the idea of directing *GYPSY*, with Caroline O'Connor in the central role, was irresistible! And I was to be surrounded by exciting collaborators who would share in the creation of what you see this evening. *GYPSY* is that classic creation, the "book" musical, with more dialogue than most modern musicals. In fact, the spoken scenes carry the narrative and plot, not the songs, (which are, nevertheless, show stoppers!). This piece requires a tour de force performance at its centre. One can feel Ethel Merman in that first rehearsal room back in the 50's grabbing every song and delivering them all sensationally. The result is that there isn't a chorus ensemble as such, few duets and the central character, Momma Rose, sings more than three quarters of the musical numbers. Athletic stamina and lungs of iron are therefore required, as well as virtuoso acting ability and phenomenal energy to drive the piece dramatically and deliver Rose's unstoppable ambition and optimism.

In this production I did take the license of "stealing" (with Caroline's generous agreement) the song: "Mr Goldstein" from Momma Rose and including almost the full company in it by sharing the lyrics between the "family" members. This gives it an ensemble energy and feel. And Rose's songs with Herbie became more like duets than the originals. We also included a "Dream Ballet" sequence in Tulsa's scene with Louise in Act One.

This is a story about show business...its infectious, drug-like quality and its big dipper ride of ups and downs. It exposes the enormous personal cost of abandoning the ordinary life and joining the circus, with its colourful lure and promise of celebrity and stardom. Behind the make-up, however, it's a demanding and soul-destroying life which suits only an armoured and passionate (and insane?) few.

As one of those rare few myself, I empathise with Momma Rose...I too have enjoyed the bumpy ride, soaring and plummeting in turn, over and over again, in relation to the changing fortunes of my own Theatre career. I know the sort of energy, dedication, single-mindedness, fortitude and forward momentum it takes to just keep going against what sometimes seems like insurmountable odds. And, like Momma Rose, I am a woman.

But I don't have children, and Rose's complicated form of love for her kids, especially her daughter, Louise, forms the central spine of the piece. It is here that the complex questions are asked about Rose's motives and behaviour because she transfers her own lost dreams onto her daughters. Is she a monster or a martyr? Or a little bit of both? After all, life, and Theatre, aren't just black and white!

GYPSY is a love story of a kind. The long-suffering Herbie devotes a decade of his life to being Rose's romantic and business partner...a tricky role on the best of days - a frustrating and finally heart-breaking one on bad days. It is not easy to love someone who is already in love -with the Theatre!

Momma Rose remains one of the most towering, intriguing and demanding roles in the musical theatre canon. There are as many versions of *GYPSY* as there are stars who play the leading role. As a Director, that collaboration and understanding is pivotal to creating a great production.

And we have been truly blessed. In this piece, the remarkable, and now legendary, original creators have plunged their scalpel into the very heart of what it means to be called to the stage. It's one of the most popular and loved musicals ever written and maintains its legendary status through the decades. We hope that with this performance, you'll understand why.

GALE EDWARDS

CAROLINE O'CONNOR



ROSE

Caroline appeared The Production Company's first season in the title role in *Funny Girl* and in 2001 in *Mack and Mabel*. She returns to Australia after performing at the 2013 Tony Awards at Radio City Music Hall New York. She played Miss Shields on Broadway in *A Christmas Story the Musical* at the Lunt Fontanne Theatre.

Recent roles include Sarah Jane Moore in *Assassins* at Milwaukee Repertory Theater, Phyllis Rogers Stone in the Chicago Shakespeare Theatre's production of *Follies*, Mrs Lovett in *Sweeney Todd* at the Chatelet Theatre in Paris and Hildy Esterhazy in the English National Opera's production of *On the Town* at the London Coliseum and the Chatelet Theatre. After thrilling audiences as Velma Kelly in the Australian production of *Chicago*, Caroline made her Broadway debut in this musical.

Caroline played Judy Garland in the world premiere of *End Of The Rainbow*, directed by Wayne Harrison. *Bombshells*, a one-woman play, was commissioned by the MTC, directed by Simon Phillips and written for Caroline by Joanna Murray-Smith. It played to packed houses in Sydney, Melbourne, and Adelaide before touring to the Toronto Festival, the Edinburgh Festival (Fringe First) and The Arts Theatre in London's West End, for which she was nominated Best Actress in a Play at the Laurence Olivier Awards.

David Williamson wrote the play *Scarlett O'Hara at the Crimson Parrot* for her. Other Australian productions include *West Side Story*, *Piaf* and *Man of La Mancha*. Her own show, *From Stage to Screen*, has been presented in Adelaide, Melbourne, at the Sydney Opera House and filmed for ABC TV.

West End credits include Mabel Normand in Jerry Herman's *Mack and Mabel* (Olivier nomination for Best Actress in a Musical), *Romance, Romance, Street Scene* (ENO), *Hot Stuff*, *Matador*, *Budgie*, *The Rink*, *Cabaret*, *Me and My Girl*, *Show Boat* (RSC), *Damn Yankees*, *Baby*, *Into the Woods* and *A Chorus Line*. She performed in the BBC Proms, at the Royal Albert Hall in Stephen Sondheim's 80th Birthday Concert and in John Wilson's Hooray for Hollywood.

Her latest one-woman show, *The Showgirl Within*, was produced at the Garrick Theatre in London. Her film work includes Nini Legs in the Air in Baz Luhrmann's *Moulin Rouge*, Ethel Merman in the Cole Porter biopic *De-Lovely*, Georgia in the Australian film *Surviving Georgia* and most recently *Carlotta* for the ABC. Caroline has recorded four solo CDs *What I did for Love*, *Stage to Screen*, *A Tribute to Piaf* and *A Tribute To Garland*.

MATT HETHERINGTON



HERBIE

This is Matt's eighth production for The Production Company, having previously starred in *Promises, Promises*, *Dirty Rotten Scoundrels*, *Sweet Charity*, *South Pacific*, *Damn Yankees*, *Sugar* and *Hair*.

Matt has performed as a feature vocalist across Australia and around the world as a soloist and with his band, The Matt Hetherington Band. Last year he was a participant in *The Voice* as a finalist on Team Delta.

Matt is a multi-award winning musical theatre actor, having won a Helpmann Award for *The Full Monty* and Green Room Awards for *Dirty Rotten Scoundrels* and *Next To Normal*. He has starred in numerous other productions including *Shane Warne – The Musical*, *Flowerchildren*, which has just completed its second Melbourne season, and *Happy Days, The Arena Spectacular*. On television he has guest starred in *City Homicide*, *Stingers*, *Marshall Law*, and the critically acclaimed *The Dr Blake Mysteries*.

Matt has just released his debut album, *Matt Hetherington* (available on iTunes worldwide) but considers his greatest production to be his new son Oscar, born July 4th last year.

He dedicates this performance to the memory of John Milson, who was the head of musical theatre at WAAPA and sadly passed away in January this year. www.facebook.com/matthetheringtonmusic



New Album

"Matt Hetherington" on Sale NOW in the State Theatre foyer or on iTunes

Matt Hetherington



LOUISE



JUNE

CHRISTINA TAN

Melbourne-born Christina Tan studied at the Victorian College of the Arts. At the age of twelve she began her professional career in Picasso's play *Four Little Girls*.

Since then she has performed in musical theatre productions throughout Australia, New Zealand and Asia. Her theatre credits include Eliza in *The King and I*, Joseph and the Amazing Technicolor Dreamcoat, Meg Giry in *The Phantom of the Opera*, Roxie and Velma in *Chicago*, Bianca and Lois Lane in *Kiss Me, Kate!* in New Zealand, Miss Krumholtz in *How To Succeed In Business Without Really Trying*, Erma in *Anything Goes*, Rose Seller and Nancy in *Oliver!*, Scaramouch and Oz cover in *We Will Rock You*, lead female vocalist in *Dirty Dancing*, Gigi, Kim and Ellen cover in *Miss Saigon* and Nessarose cover in *Wicked*. Most recently, Christina was an original cast member of the *Mary Poppins* Australasian tour, where she was also the Mary and Mrs Banks cover.

GEMMA-ASHLEY KAPLAN

South African born Gemma-Ashley comes from three generations of performers, with her grandparents, parents and two sisters all having tread the boards. After years of voice and dance training in her youth, Gemma-Ashley undertook a Bachelor of Performing Arts at WAAPA, where her roles included Maria in *West Side Story*, Young Jane Eyre in *Jane Eyre* and Sarah Darcy in *The Good Fight*, which also toured to the New York Music Theatre Festival. She has trained in voice with Harry Mullany for the past thirteen years.

Gemma-Ashley's professional stage credits include Sally Durant in *Follies* for The Production Company and originating the role of Clara Makin in *The Hatpin* for seasons at the Seymour Centre in Sydney and the New York Music Theatre Festival. In the two years she lived in New York, Gemma appeared in many Broadway and off Broadway concerts including *Cutting Edge Composers*.

Screen credits include a recurring role in *Neighbours*, guest lead in *Mr & Mrs Murder* and the short film *My Favourite Cafe* directed by Paul Watters.

Most recently, Gemma originated the lead role of Lisa in the world premiere of *Moonshadow*, the musical featuring the songs of Cat Stevens.



CHLOE DALLIMORE - TESSIE TURA

Chloe was most recently seen on the Sydney stage as Morticia Addams in *The Addams Family Musical* directed by Jerry Zak. She is probably best known for her portrayal of Ulla in *The Producers*, which won her five awards, including the 2005 Helpmann Award. For The Production Company, Chloe has starred in *Crazy For You* and *Thoroughly Modern Millie*. Other musical theatre credits include *Chicago*, *Sweet Charity*, *Annie*, *The Wizard Of Oz*, *Shout!* and *Oliver!*

Chloe was invited by the Australian Consulate in New York City in 2006 to perform at the Opening Gala of G'Day USA at the American History Museum and has also appeared in *Chloe Dallimore's Magic of Musicals* at Taronga Zoo Twilight Series in 2009, *Showstoppers* with the Adelaide Symphony Orchestra in 2009, and *The Spirit of Christmas* with the Queensland Symphony

She is thrilled to be returning to The Production Company with *GYPSY*.

Chloe is a proud member of Actor's Equity and is the NSW Vice-President.



NICKI WENDT - MAZEPPA

Nicki grew up in Perth, trained at WAAPA and on graduating, moved to Melbourne where she has worked continuously in all aspects of the industry. *GYPSY* is her fifth performance with The Production Company, her previous shows being *Mame*, *42nd Street*, *Thoroughly Modern Millie* and *Annie Get Your Gun*.

Nicki's theatre credits are extensive, having appeared in dozens of productions for the MTC, including leads in *Rockabye*, *Three Days of Rain*, *Romeo and Juliet*, *Company*, *Our Country's Good*, *The Recruiting Officer*, *Measure For Measure*, *As You Like It*, *The Cherry Orchard*, *Les Liaisons Dangereuses* and *Private Lives*. She has also worked with Playbox, STC and Black Swan. Nicki has graced the small screen in telemovies and series ranging from *Society Murders* to *Neighbours*, *Acropolis Now* and *Seachange*, to name a few.

Nicki has also directed works for Victorian Opera including the hugely successful *Midnight Son*, for which she won the 2013 Green Room Award for Best Direction in Opera.



ANNE WOOD - ELECTRA/MISS CRATCHITT

Anne performed the leading role of Donna Sheridan in the original Australian cast of *Mamma Mia!* for three years, winning a Green Room Award and an invitation to play the role on London's West End. She later recreated the role for the tenth anniversary national tour.

Previously Anne spent time in London and Hamburg, playing leading roles in *Cats*, *Aspects of Love*, *Crazy For You*, *A Swell Party* and *Barnum*. Other credits include Elsa Schraeder in *The Sound of Music*, *Minefields* and *Miniskirts*, *Australia's Leading Ladies Concerts*, *Menopause the Musical*, *Prodigal*, Magenta in *The Rocky Horror Show* and Madame Morrible in *Wicked*.

For The Production Company, Anne has appeared as Phyllis Stone in *Follies*, Mrs. Mullin in *Carousel*, Meg Boyd in *Damn Yankees* and Evangeline Harcourt in *Anything Goes*.

Anne's debut solo album, *Divine Discontent*, was released in 2012.

www.annewood.com.au



NATHAN PINNELL - TULSA

Nathan trained with the Bev Palmer Dancers and the Victorian College of the Arts Secondary School. His professional career began at the age of nine in Opera Australia's productions of *Falstaff* and *Manon Lescaut*.

On London's West End, he has played Carlos in *Legally Blonde*. Australian credits include *Spirit of Fosse*, the cover of Mary Sunshine in *Chicago*, for which he received a Green Room Award, Baby in the recent production of *West Side Story*, *We Will Rock You* in Australia and Japan and *Eurobeat: Almost Eurovision*. Nathan was in *Dusty The Original Pop Diva* (Young Tom), Disney's *High School Musical: Live on Stage* (covering Jack Scott and Ryan Evans) and most recently *Chitty Chitty Bang Bang*.

Nathan's performances with Caroline O'Connor include the concert for the re-opening of Hamer Hall, where he was Assistant Choreographer. For The Production Company, Nathan has performed in *The Music Man*, *Sweet Charity*, *Forty Second Street* and *Promises, Promises*.

Nathan is thrilled to be a part of *GYPSY* and would like to thank his mum, dad, Elyse and Stephen and dedicates his performance to Lesley.



FRANK GARFIELD - POP, KRINGELEIN, CIGAR

In a career spanning over forty-five years, Frank's credits include *West Side Story*, *My Fair Lady*, *Titanic the Musical*, *Dracula*, *Cabaret*, *The Sound of Music*, *Show Boat*, *Guys & Dolls*, *I Do! I Do!*, *Cole*, *Brecht on Brecht*, *Man of La Mancha*, *The Fantasticks*, *The Threepenny Opera*, *The Dresser*, *Chinchilla*, *A Midsummer Night's Dream*, *Romeo and Juliet*, *The Gingerbread Lady*, *Henry IV*, *Money & Friends* and *Travelling North* – for which he won the HVTC Conda Award (Best Supporting Actor).

Frank played Herr Flick in the Australian and U.K. seasons of *'Allo 'Allo*, and also co-produced two Sydney seasons of *Get Happy!* Television and film roles include *Murder Call*, *Police Rescue*, *Phoenix*, *G.P.*, *Home and Away*, *Scales of Justice*, *Dags* and *Mary*.



GLEN HOGSTROM - UNCLE JOCKO, WEBER, MR GOLDSTONE, PHIL

Since graduating from WAAPA in the late 80's, Glen has enjoyed a diverse career, writing and performing his own material, playing guitar, trumpet as well as performing in many musical theatre roles. Glen is also an acrobat and circus performer and choreographs action fight scenes and circus routines.

His theatre credits include playing The Beast in *Beauty and the Beast*, Munkustrap in *Cats*, covering and playing many roles in *Les Miserables*, Tybalt in *Romeo and Juliet* and Puck in *A Midsummer Night's Dream*. He was in the original Australian productions of *Return to the Forbidden Planet*, in which he played Bosun Arras, *Aspects of Love* in which he was a featured dancer and acrobat, *Sideshow Alley* playing the role of Larry, and *Billy Elliot*, *Mamma Mia!* and *Miss Saigon*, in which he toured internationally. Glen has worked as dance captain on *Billy Elliot* and on the second tour of *Mamma Mia!* He has also worked assisting directors, script writing and editing and directing some shows. Recently he was the Staging Supervisor of *Wicked*.

Glen has been a proud member of Actors Equity/M.E.A.A for over twenty years.



MUSICAL NUMBERS

ACT ONE

- Overture - Orchestra
- Rose's Entrance: Let Me Entertain You - Baby June & Baby Louise
- Some People - Rose
- Small World - Rose & Herbie
- Baby June And Her Newsboys - Newsboys
- Let Me Entertain You - Baby June
- Military Routine - Orchestra
- Mr Goldstone - Rose, Herbie & Company
- Little Lamb - Louise
- You'll Never Get Away From Me - Rose & Herbie
- Farm Sequence - June, Farmboys and Cow
- Broadway - June & Boys
- If Momma Was Married - June & Louise
- All I Need Is The Girl - Tulsa
- Everything's Coming Up Roses - Rose

ACT TWO

- Entr'acte - Orchestra
- Toreadorables - Ensemble
- Together Wherever We Go - Rose, Herbie & Louise
- You Gotta Get A Gimmick - Mazeppa, Electra & Tessie
- Small World - Reprise - Orchestra
- Gypsy Strip Routine - Louise
- Rose's Turn - Rose
- Curtain Calls and Finale - Company
- Exit Music - Orchestra

SYNOPSIS OF SCENES

The action of the play covers a period from the early 1920s to the early 1930s, and it takes place in various cities throughout the U.S.A.

ACT ONE

- Scene 1 Vaudeville theatre stage, Seattle
- Scene 2 Kitchen of a frame house, Seattle
- Scene 3 Road between Seattle and LA
- Scene 4 Backstage of a vaudeville house, LA
- Scene 5 On stage of a vaudeville theatre, LA
- Scene 6 Hotel rooms, Akron
- Scene 7 Chinese restaurant, NY
- Scene 8 Stage of Grantziger's Palace, NY
- Scene 9 Mr Grantziger's office
- Scene 10 Theatre alley, Buffalo
- Scene 11 Railroad platform, Omaha

ACT TWO

- Scene 1 Desert country, Texas
- Scene 2 Backstage of a burlesque house, Wichita
- Scene 3 Backstage corridor
- Scene 4 Backstage and on stage: Wichita, Detroit, Philadelphia & Minsky's
- Scene 5 Louise's dressing room
- Scene 6 Bare stage after the show



CAST

Rose **Caroline O'Connor**
Herbie **Matt Hetherington**
Louise **Christina Tan**
June **Gemma-Ashley Kaplan**
Tulsa **Nathan Pinnell**

Tessie Tura **Chloe Dallimore**
Mazeppa **Nicki Wendt**
Electra/Miss Cratchitt **Anne Wood**

Pop, Kringelein, Cigar **Frank Garfield**
Uncle Jocko, Weber,
Mr Goldstone, Phil **Glen Hogstrom**

Newsboy, Pастey **Mark Hill**
Newsboy, George **Drew Weston**
Newsboy, Yonkers **Liam McIlwain**
Newsboy, L.A. **Brenton Wilson**
Newsboy, Angie **Matt Holly**

Agnes **Emily Langridge**
Dolores **Zoe Coppinger**
Marjorie May **Jessie Phillips-Lee**

Baby June **Hattie Hook/
Paris Mahar**
Baby Louise **Quinn Cameron/
Lucille Le Meledo**

Baby Newsboy **Jack Bergin**
Baby Newsboy **Jack Lyall**
Baby Newsboy **Luke Tieri**
Baby Newsboy **Angelo Vasilakakos**

PRODUCTION

Technical Director **David Miller**
Production Manager **Berni Sweeney**
Company Manager **Adam McGurk**
Stage Manager **Meg Deyell**
Assistant Stage Manager **Chloe Woodman**
Wardrobe Supervisor **Kim Bishop**
Costume Makers **Bryn Meredith
Zoe Gymer-Waldron
Julie Beach
Rick McGill
Shane Dunn**

Wigs **Corrine Day**
Wigs Assistant **Phillip Sweeney**
Sound Mix Engineer **David Tonion**
Radio Mic Engineer **Cameron Herbert**
Stage Sound Technicians **Melissa Panettiere
Jackson Scandrett
Lisa Cioffi
Hazel Simpson**

Set Construction **Malthouse**
Child Chaperones **Gen Cracknell
Penelope Thomson**

Costume Interns
from RMIT **Grace Louey
Lauren Tausend,
Stephanie Pearson
and Manna Ly**

GYPSY



ORCHESTRA

1ST VIOLINS

Matthew Hassall
Lynette Rayner

2ND VIOLINS

Alyssa Conrau
Ruby Paskas

VIOLA

Jason Bunn

CELLO

Paul Zabrowarny
Alister Barker

BASS

Matthew Thorne

OBOE/COR ANGLAIS

Dafydd Camp

REEDS

Tony Hicks
Barrie Shaw
Grania Burke
Martin Corcoran
Greg Clarkson

HORN

Anton Schroeder

TRUMPETS

Michael Fraser
Ari Farrar
Mark Skillington

TROMBONES

Scott Evans
Anthony Gilham
Ben Anderson

HARP

Mary Anderson

PERCUSSION

Paul Sablinskis

DRUM KIT

Ronny Ferrella

BOARD

Tony Osmond (Acting Chair)
Jason Bunn
Paul Champion
Jane Gilmour OAM
Richard Harmer
Sue Natrass AO
Rob Perry



Orchestra Victoria
Ph (03) 9694 3600
admin@orchestravictoria.com.au
www.orchestravictoria.com.au

MANAGEMENT & ARTISTIC STAFF

ARTISTIC DIRECTOR

Adam Chalabi

CONCERT MASTER

Roger Jonsson

SECONDED ADMINISTRATOR

Claire Stonier-Kipen

FINANCE & CORPORATE

SERVICES MANAGER

David Hagan

DIRECTOR OF OPERATIONS

James Foster

ORCHESTRA MANAGER

Alex Morris

CONCERT & WORKSHOP COORDINATOR

Edwina Dethridge

OPERATIONS ASSISTANT

Estelle Hentze

PRODUCTION COORDINATOR

Brihony Dawson

ORCHESTRAL LIBRARIAN

Robert Smithies

COMMUNITY RELATIONS

Liz Welch

HR CONSULTANT

Clare Blake

FINANCE & PAYROLL OFFICER

Rose Dragovic

ADMINISTRATION OFFICER

Meredith Dellar

Orchestra Victoria acknowledges the outstanding generosity of our very special donors.

MAJOR GIFTS

Robert Albert AO, RFD RD &
Mrs Libby Albert
Evelyn & Tom Danos
Jane Edmanson OAM
Lindsay Fox
Neilma Gantner
Gaye & John Gaylard
Geoff Handbury AO
Peter A Kingsbury
Heather McKenzie
Don Mercer
Richard Mills
Baillieu Myer AC & Mrs Sarah Myer
Margaret S. Ross AM

PRINCIPAL REGIONAL PARTNER

Bendigo Bank

Bendigo Bank's strong community and regional focus has great synergies with Orchestra Victoria's work across Victoria.

TRUSTS & FOUNDATION SUPPORT

William Angliss (Victoria) Charitable Fund
Collier Charitable Fund
Joan & Peter Clemenger Trust
The A.L. Lane Foundation
Sidney Myer Fund
The Myer Foundation
Australian Communities Foundation
William Buckland Foundation
Ray & Joyce Uebergang Foundation

CORPORATE

Ace Radio
Allens > < Linklaters
Primrose Properties P/L
Kent Moving & Storage
Maple-Brown Abbott Ltd

GOVERNMENT PARTNERS

Australia Council for the Arts
Arts Victoria
City of Melbourne

PERFORMANCE PARTNERS

The Australian Ballet
Opera Australia
The Production Company
Victorian Opera

PRINCIPAL PRESENTING PARTNERS

3MBS 103.5FM
Arts Centre Melbourne
Melbourne Recital Centre
Melba Recordings

MYSTERIOUSLY PERFECT

Frank Van Straten uncovers the story behind *GYPSY*

'A mysteriously perfect venture' – that's how the venerable New York critic Walter Kerr summed up *GYPSY*. It's a good description because, though *GYPSY* resulted from the collaboration of some of American theatre's greatest talents, there was indeed something extra, something indefinable, something mysterious. That something made it truly great. Many Broadway buffs regard it as the perfect musical, the apotheosis of the form.

On the surface *GYPSY* is a joyous celebration of show business, but its story is not the sweet and sunny stuff of many of its contemporaries. Its characters are real people, not cardboard cut-outs; they are ambitious, sometimes unpleasant. But they are human.

GYPSY was inspired by the story of Gypsy Rose Lee, stylish stripper, actress, writer and, briefly, television talk-show host. Born Louise Rose Hovick in Seattle, Washington, in 1914, she was only four when she started in vaudeville with her sister, who was later known in Hollywood as June Havoc. Louise, transformed into Gypsy Rose Lee, became the most celebrated stripper of the 1930s. She made several movies and wrote two mystery novels as well as an autobiography, *GYPSY*, which was published in 1957. But the focal point of *GYPSY* turned out not to be Louise/ Gypsy Rose Lee, but her indomitable stage mother, Rose, whose uncontrollable ambition so twisted her children's lives. She was, wrote Louise, 'courageous, resourceful and, in a feminine way, ruthless.'

'ALL I NEED IS THE GIRL'

After reading just one chapter of the *Harper's Magazine* serialisation of *GYPSY*, legendary Broadway producer David Merrick snapped up the stage rights. He and co-producer Leland Hayward conceived their new project as a star vehicle for Ethel Merman, the brassy

bombshell for whom Hayward had created *Call Me Madam* in 1950. Iron-lunged Miss Merman, they agreed, would be perfect as Rose. And, luckily, Miss Merman concurred. Unlike Merrick, she had read the whole book and so determined was she to play Momma Rose that she announced that she was prepared to shoot anyone else who challenged her for the part.

To adapt *GYPSY* for the stage, and to provide its lyrics, the producers chose Betty Comden and Adolph Green. Despite their vast experience, they were defeated by the larger-than-life character of Rose and withdrew from the project. Hayward then persuaded *West Side Story* librettist Arthur Laurents to accept the challenge. And then, as if to endorse the potential of the project, the enormously talented Jerome Robbins joined the team as director and choreographer.

And what of the score? It's on record that both Irving Berlin and Cole Porter politely said 'no'. Robbins suggested Hayward approach Stephen Sondheim to provide both lyrics and music, but this time it was Miss Merman who said 'no'. She wanted Jule Styne, a master at writing for individual voices such as hers. Sondheim agreed to stay on as lyricist, for the sake of the experience that *GYPSY* – and Merman – would provide.



ETHEL MERMAN
– THE ORIGINAL
MOMMA ROSE, 1959.

Jule Styne's ability to write catchy tunes and to shape songs for particular singers was never more apparent. With *GYPSY* he presented Merman with a spectacular showcase for her talent – and she was required to act as well. She rose to the challenge magnificently.

But it was not all newly minted. Styne recycled two of his earlier compositions: the music for 'You'll Never Get Away From Me' was originally written for a 1957 television musical version of *Ruggles of Red Gap*, and the showstopper 'Everything's Coming Up Roses' was a reworking of a song dropped from his 1947 show *High Button Shoes*.

An instant triumph, *GYPSY* delivered a 'roaring finale' to the 1958-59 season. Walter Kerr called it 'the best damn musical I've seen in years' and engagingly described its star as 'a brassy, brazen witch on a mortgaged broomstick, a steamroller with cleats, the very mastodon of all stage mothers'. June Havoc had reservations, saying that Ethel Merman was nothing like her mother, the original Rose: 'Mother was tiny, fragile, beguiling – and lethal'.

After *GYPSY*'s Broadway success it was inevitable that Hollywood would show interest. The rights were acquired by Warner Brothers who chose Mervyn LeRoy as producer and director. In his long career LeRoy had directed only a few musicals but his talents as a drama director made him ideal for *GYPSY*.

As happened so often in her career, Merman was by-passed by Hollywood, and the role of Momma Rose went to Rosalind Russell. Her singing voice was provided by Lisa Kirk – though Miss Russell claimed full credit in her autobiography. Rose's daughters, June and Louise, were played by Ann Jillian and Natalie Wood, with Marni Nixon filling in for Miss Wood's high notes.

It took fourteen years for *GYPSY* to make the trip across the Atlantic. London's Momma Rose was Angela Lansbury, and her brother, Edgar, was co-producer. Critic Robert Cushman described her portrayal as 'a slow steady climb towards magnificence'. During the 300-performance run, Dolores Gray took over the lead; Miss Lansbury, meanwhile, took the production back to the United States for a marathon tour that opened in Los Angeles and eventually ended up on Broadway – where its star garnered a Tony for her efforts. In 1975 Miss Lansbury had another date with *GYPSY*, reprising the role at the Westbury Music Fair, a vast 2800-seat theatre-in-the-round on Long Island.

There have been many other notable American productions. Momma Rose was played by Dolores Gray at the famous Paper Mill Playhouse at Millburn, New Jersey, in 1976, by Kay Ballard in summer stock, and by Mimi Hines in California in 1977. A major 1989 Broadway revival starred the dynamic Tyne Daly. Four years later Bette Midler was featured in an acclaimed version filmed specially for television. In 1998 Paper Mill restaged *GYPSY* as a showcase for



A SCENE FROM THE ORIGINAL NEW YORK PRODUCTION, 1959. FROM LEFT: SANDRA CHURCH, JACK KLUGMAN, JACQUELINE MAYRO, ETHEL MERMAN, MARSHA RIVERS.

'Rose's Turn' is a theatrical tour-de-force of unprecedented potency. It is basically an amalgam of songs heard earlier in the show, structured into a passionate monologue of pathos and resolution. The result, recognised as musical theatre's single most powerful moment, provided Merman with a shattering climax to the most dramatically challenging role of her career.

As if to balance the frenzy of the finale, orchestrators Sid Ramin and Robert Ginzler crafted a five-minute overture so rich in colour and excitement that it has, in its own way, become a classic – 'the ultimate Broadway overture'.

'MAY WE ENTERTAIN YOU?'

After a five-week house-full try-out run in Philadelphia, *GYPSY* opened at New York's Broadway Theatre on 21 May 1959. In the glittering first night audience were Gypsy Rose Lee and her sister, June Havoc.

Betty Buckley: 'Miss Buckley strides through it like a cross between a growl trumpet and a hydrogen bomb,' reported the *New York Daily News*. More recent Broadway Momma Roses have been Bernadette Peters in 2003 and Patti LuPone in 2008.

Britain has been less fortunate. There was no major new production of *GYPSY* until March 2012, when our own Caroline O'Connor, displaying what the *London Telegraph* described as 'leather-lunged panache', starred in a highly acclaimed production at Leicester's Curve Theatre. 'Head straight to Leicester,' advised another reviewer. 'Beg, borrow or steal a ticket.' A West End production is slated for later this year.

GYPSY DOWN UNDER

In 1975 J.C. Williamson Theatres Ltd acquired the rights to the London-originated production, and imported Barrie Ingham to direct it; he had played Herbie in the West End.

Somewhat uncharacteristically, Williamson's gave the star role to an Australian – Gloria Dawn. Melbourne-born, Miss Dawn came from a hugely talented multi-generation show business family. Not only was she seasoned in musicals and revue, she was a highly regarded 'straight' actor and, according to her daughter, Donna Lee, who had a small role in *GYPSY*, Miss Dawn was, in her own way, a stage mother as indomitable as Rose.

The other principals were Graham Rouse (Herbie), Jack Webster (Tulsa), Sue Walker (Louise) and Pamela Stephenson (June). Lesley Baker was engaged as a standby for Miss Dawn. The original Jerome Robbins choreography was expertly reproduced by the indefatigable Betty Pounder, assisted by Laurel Veitch. Gail Esler was the stage manager, assisted by Wayne Harrison. Dale Ringland conducted the orchestra.

GYPSY opened to a wildly enthusiastic first night audience at Her Majesty's Theatre in Melbourne on 3 May 1975. For Gloria Dawn it was a glorious triumph. Tragically, it was to be her last. She became gravely ill. Toni Lamond was engaged to replace her for the final two weeks of the Melbourne season.

Toni's first appearance was at a matinee. 'Momma Rose makes her entrance from the back of the stalls,' she recalled. 'It was a full house and the audience was buzzing with anticipation. I made my entrance down the aisle with a tiny dog tucked under my arm. There was a wonderful burst of welcoming applause. I swept down the aisle, started up the steps to the stage... and fell flat on my face, squashing the dog.'

It was twenty years before Australia saw *GYPSY* on stage again. In June 2000 The Production Company staged a sensational *GYPSY* at Arts Centre Melbourne's State Theatre. Judi Connelli headed a cast that included John McTernan (Herbie), Mary-Anne McCormack (Louise), Thern Reynolds (Tulsa) and Maria Mercedes (Mazeppa). Jack Webster choreographed, Guy Noble was musical director, and Nancye Hayes directed.

'This *GYPSY* is a triumph!' enthused Xenia Hanusiak in the *Herald Sun*. 'The Production Company has blended one of the finest pieces in musical theatre with a dream cast and a distinguished production team.'

And now *GYPSY* is back in Melbourne – and, as is right and proper, Ms O'Connor's Talkin' Loud! So, drop everything. Beg, borrow or steal a ticket and head straight for the Arts Centre! Everything's Coming Up Roses!!

© Frank Van Straten OAM, 2013

Frank is a theatre historian and author. His latest book, *Her Majesty's Pleasure*, celebrates the centenary of Her Majesty's Theatre in Adelaide.

GLORIA DAWN AS MOMMA ROSE,
1975.



TONI LAMOND AS MOMMA ROSE,
1975.



JUNE SALTER AS MOMMA ROSE,
1980.



ENSEMBLE



ZOE COPPINGER

GYPSY marks Zoe's debut at the age of eighteen into professional musical theatre. Zoe can't wait to perform with Caroline O'Connor and the cast of *GYPSY*. She began dancing at the age of three and for the past six years has studied all facets of dance at Michelle Slater Coyne Performing Arts.

Zoe would like to thank her amazing teachers, but mostly Michelle and Kevin for making her into the performer and person she is today. She would also like to thank her mum, dad, sisters and Nan for their unconditional love and support through this journey.



MARK HILL

Mark began performing at the age of four, appearing in professional touring productions of *Faust* and *The Wizard of Oz*. During school, Mark played lead roles in the children's television series *The Wayne Manifesto* (ABC) and *Cybergirl* (Channel 10) and performed live on stage with Michael Jackson in his *History* tour.

Mark was a member of Bindi Irwin's *Crocmens*, working extensively on stage and screen throughout Australia and the USA with highlights including *The Today Show* and the Macy's Thanksgiving Day Parade. For The Production Company, Mark has featured in *Crazy For You*, *The Boy Friend*, *Dirty Rotten Scoundrels* and *The Producers*. He was an original Australian cast member of *Mary Poppins*, covering the role of Bert, which he performed many times. Mark also played Don in *A Chorus Line*, *Eurobeat* and most recently featured in *Chitty Chitty Bang Bang* covering the role of Goran.



MATT HOLLY

Matt made his professional debut in the 2010 production of *West Side Story*. His credits include Showboy/ensemble in the world premiere of *Love Never Dies* and the DVD release, the ensemble in *Moonshadow* and Mike in *A Chorus Line*. Most recently Matt received rave reviews for his portrayal of John Hinckley in Stephen Sondheim's *Assassins*. Next month, Matt will commence rehearsals for the role of Chistry in the much anticipated Australian return season of *Wicked*.

Matt thanks his partner, family, friends and agent for all the support they show and faith they have in him. He feels very fortunate to be making his Production Company debut in *GYPSY*. He is a proud member of Equity.



EMILY LANGRIDGE

Emily graduated with a Bachelor of Music Theatre from WAAPA in 2012. She also has an Advanced Diploma of Arts (Music Theatre/Commercial Dance) from the Australian Dance Performance Institute, which she completed in 2008.

While attending WAAPA, Emily played the lead role of Kira in *Xanadu* as well as featuring in *Into the Woods* (Stepmother), *How to Succeed in Business Without Really Trying*, *Crazy For You*, *Violet*, *Ragtime* and *Cabaret*.

Emily is thrilled to be making her professional debut in *GYPSY* with The Production Company, and thanks her family, friends, boyfriend and Ian White Management for their support.



LIAM MCILWAIN

Liam studied at the Central QLD Conservatorium, Melbourne's Dance Factory and the Actors Centre in Sydney. Most recent credits include *Chitty Chitty Bang Bang* and the Australian/NZ tour of *Mary Poppins* (understudying and performing the roles of Bert and Robertson Ay).

Other credits include *Bye Bye Birdie*, *Grease – The Arena Spectacular* (Doody and Sonny understudy), *Sunset Boulevard*, *Saturday Night* (Bobby), *Dusty*, *Cats* (Skimbleshanks), *Shout!* (Col Joye understudy) and *High School Musical – Live On Stage* (Ryan Evans).

Film and television credits include *The Morning Show*, *Carols By Candlelight*, *Woolworth's Carols in the Domain*, *Mornings with Kerri-Anne*, *Shout! - The Film* (Col Joye) and the Bollywood feature film *Salaam Namaste*.



JESSIE PHILLIPS-LEE

Jessie is currently finishing her Diploma of Musical Theatre at Patrick Studios. Later this year she plays Mae in LaChiusa's *The Wild Party*, directed and choreographed by Andrew Hallsworth.

GYPSY marks Jessie's first appearance with The Production Company and her professional theatre debut. She is thrilled to be working with Caroline O'Connor, Gale Edwards and the rest of the creative team. She would like to thank her family, friends and teachers for their support.



DREW WESTON

Drew graduated from WAAPA in 2009. In late 2012, he performed in Shanghai in Paul Warwick Thornton's *Ultimate Broadway*. He also toured in the ensemble of the Australian production of Disney's *Mary Poppins* and understudied the role of Bert.

While studying at WAAPA, Drew performed the role of Britt Craig in *Parade*, Bert in *42nd Street*, Steve in *Rent* and Guy in the Australian premiere of *Loving Repeating*. Other productions include *Jane Eyre: the Musical*, Carmel Dean's *A Girl Named Vincent*, *Tales from Ovid*, *The Laramie Project* and *Oklahoma!*.

Prior to WAAPA, Drew trained with the Young Australian Broadway Chorus under the direction of Collette Mann, Jacqui Green and Mathew Frank. Drew also features on the original cast recording of *The Silver Donkey* by Mathew Frank and Dean Bryant. Drew was thrilled to have been given the opportunity to be amongst the top thirty Australian semi-finalists for the inaugural Rob Guest Endowment Award.

In 2013, Drew will be seen in the third series of the Seven Network's *Winners & Losers*. He also features on Drew Gasperini's (*Smash*) album, *I Could Use a Drink* which is available now on iTunes.



BRENTON WILSON

Brenton most recently toured Australia and New Zealand with *Mary Poppins* (Disney Theatricals). Other credits include the Sydney season of *Jersey Boys* (New Theatricals), playing Joe Pesci, understudying and performing the role of Frankie Valli, *CATS* (Really Useful Company) playing Mungojerry, *Le Grande Cirque* (TML Enterprises), *Dusty - Original Pop Diva* (Dusty Productions), *Saturday Night Fever* (David Atkins Enterprises), *Leader of The Pack - The Ellie Greenwich Musical* (Leader Entertainment) and the 2000 Olympic Games Opening Ceremony.

Brenton recently worked on a tele-movie based on the life of Carlotta, which will be aired on ABC later this year.



QUINN CAMERON - BABY LOUISE

Eleven year old Quinn learns ballet, jazz, tap and contemporary dance at her mother Christa Cameron's school in Canterbury and is trained vocally by Melanie Hillman. Quinn has flourished under Triple Talent Management, featuring in *RACV* and *Sovereign Hill TVC*'s, short film *SWITCH*, and as Young Billie in *Offspring*. She played Duffy and covered Annie in GFOs 2012 Melbourne season of *Annie*. Quinn played Jemima for TML's 2013 Melbourne and Adelaide seasons of *Chitty Chitty Bang Bang* and recently appeared in the title role for Babirra Music Theatre's *Annie*.

Quinn thanks her school, family, friends, Alisa (TTM), and Melanie for their ongoing love, encouragement and support



LUCILLE LE MELEDO - BABY LOUISE

At the age of four, Lucille was part of a breast cancer research campaign advertisement. At the age of five she performed a duet of *Silent Night* with her mother Debra Byrne at Carols by Candlelight.

In 2011 and 2012, Lucille played the title role of Annie at the Lyric Theatre in Sydney. At the beginning of 2013, Lucille was chosen to perform the role of Jemima in the Melbourne season of *Chitty Chitty Bang Bang*.

Lucille is a student of Heathdale Christian College and attends May Downs School of Dance. This is Lucille's first engagement with The Production Company and she would like to thank her agency BGM, her friends, family and teachers for their love and support.



HATTIE HOOK - BABY JUNE

Eleven year old Hattie followed her big sisters into dancing when she was two, first with Miss Karla in Mornington, and currently with the May Downs School of Dancing. She also studies singing, acting and piano. Hattie made her professional debut as Annie in the 2012 Melbourne season of *Annie*. She also played Jane Banks in the touring production of *Mary Poppins* in New Zealand in 2012. Hattie is thrilled to be a part of the wonderful *GYPSY* cast for The Production Company in 2013.

Hattie says a heartfelt thank you to all her teachers, past and present, but especially to Miss Renie Ann Martini OAM and the teachers at the May Downs School of Dancing for the 'love and stars'. Thank you also to Mark Dickinson and Peter and Naomi Derrick at Smallfry/Derrick Talent Elite and her family for their love and encouragement.



PARIS MAHAR - BABY JUNE

Ten year old Paris attends school at St Raphael's Primary. She trains at Studio 1 Performing Arts School under the guidance of her teachers Kelly Aykers, Carrie Green and Lianne Radloff. Her vocal coach is Sophie Viskich.

Paris has been singing, dancing and acting from a young age and her credits include the roles of Jemima cover and Susan in *Chitty Chitty Bang Bang* and the role of Duffy in *Annie* in 2012.

Paris played a guest role on Channel 7's *Winners and Losers* and performed in *Candy Man* in 2010.

Paris is thrilled to have been given the opportunity to play Baby June in *GYPSY*. She would like to thank her agents Rowena Mohr and Mary-Ann Vale at BMEG and her mum, dad, brother Cooper and family for their continued love and support.



JACK BERGIN

Jack recently made his professional musical debut in *Chitty Chitty Bang Bang*. He is thrilled to now be joining the cast of *GYPSY* and The Production Company family.

Jack began his dance training at age three and continues today at Patrick Studios Australia. He has studied various styles including jazz, tap, ballet, contemporary, hip hop and break dance.

Jack is a keen sportsman and enjoys many sports including football, gymnastics, cricket and basketball. He hopes to continue his career on the stage and wishes to thank his family and teachers for their support.



JACK LYALL

Jack is a passionate musical theatre performer who made his professional debut in 2011, playing the role of Gustave in Andrew Lloyd Webber's *Love Never Dies*. He also appeared in this role in the DVD/cinema release and was nominated for the Australian Broadway Awards as Best Young Male Actor.

Jack's more recent credits include the role of Jeremy in *Chitty, Chitty Bang Bang* and Young Stormy in Cat Steven's *Moonshadow*.

Jack is thrilled to be a part of this production of *GYPSY* and to be working with Guy Simpson again. He wants to thank Centrestage Agency and dedicates his performance to his dad.



LUKE TIERI

Luke is eleven years old and currently attends The May Downs School of Dance, where he studies all genres of dancing, singing, acting and musical theatre. Earlier this year, he made his theatre debut in *Chitty Chitty Bang Bang*.

GYPSY is Luke's first appearance with The Production Company and he feels extremely privileged to be working with such a wonderful cast and creative team. Luke wishes to thank his fabulous dance teacher Miss Renie Ann Martini, singing teacher Miss Gabi Thompson, Smallfry/DTM and his family and friends for their encouragement, love and ongoing support.



ANGELO VASILAKAKOS

Angelo has been dancing since the age of four, training in styles ranging from ballet and tap to jazz, contemporary, hip hop and Broadway. Now eleven, Angelo has been training as a singer and pianist for three years and has performed in numerous concerts, dance competitions with his school HAPA and singing school Vocal Arts Studio and several amateur musicals. Having recently finished the Melbourne season of *Chitty Chitty Bang Bang*, Angelo is thrilled to be working on *GYPSY* and would like to take this opportunity to thank his family, school dance and singing teachers, and Alisa at Triple Talent Management for their ongoing support.



GALE EDWARDS - DIRECTOR

Gale has been directing all genres of theatre and opera nationally and internationally for over thirty years, her great love being the classics and musical theatre. She has directed for all Australia's state theatre companies, Opera Australia, Victoria State Opera, South Australian Opera Company and SA Theatre Company, New Zealand International Festival of the Arts, English National Opera, Royal Shakespeare Company and Chichester Festival, Really Useful Group, Cameron Mackintosh and The Production Company (*Chess 2012*). She has won multiple awards for her directing including three Sydney Critics Circle Awards, two Helpmann Awards, a Sydney Theatre Award, three Green Room Awards, two Mo Awards for Outstanding Contribution to Musical Theatre, an Export Award, an Emmy Award for her filmed version of *Jesus Christ Superstar* and a Centenary Medal for Outstanding Contribution to Australian Society through the Arts.

Other international work includes *Romeo and Juliet* for Chicago Shakespeare Theatre, *Macbeth* for Oregon Shakespeare Company, *Hamlet*, *Edward II*, *Titus Andronicus* and *Richard III* for Washington Shakespeare Company, *Far Pavilions*, *Jesus Christ Superstar*, *St Joan*, *Aspects of Love* and *Whistle Down The Wind* on the West End, *Don Carlos*, *The White Devil* and *The Taming of the Shrew* for the Royal Shakespeare Company, which all transferred to the Barbican Theatre in London. The first two were invited to the prestigious B.A.M. in New York.

Gale has directed many theatre productions in Australia. Some highlights are *Coriolanus*, *The White Devil*, *The God of Carnage*, *Woman in Mind*, *Festen*, *Up For Grabs*, *Arcadia* and *The Way of the World* for STC, *A Doll's House* and *Buried Child* for Belvoir St, *The Tempest*, *Cat on a Hot Tin Roof*, *Hitchcock Blonde*, *M Butterfly* and *Uncle Vanya* for MTC, *The Shaughraun* for QTC, which later toured to Sydney and Melbourne. Gale directed the original production of *The Boy From Oz*, *Jerry Springer the Opera* for the Sydney Opera House and a new production of *The Rocky Horror Show*, last seen at the Comedy Theatre.

Her operas include *Carmen on the harbour*, *Salome*, *La Boheme*, *Der Rosenkavalier*, *Sweeney Todd*, *Manon Lescaut*, *The Magic Flute*, *Maria Stuarda* and *Katya Kabanava*.

Gale's new interpretation of *Chess* for The Production Company last year just won seven Green Room Awards, including Most Outstanding Production and Best Director.



GUY SIMPSON - MUSICAL DIRECTOR

Guy Simpson has been working as a Conductor, Musical Director and Musical Supervisor for over thirty years. For The Production Company he has conducted *Funny Girl*, *Call Me Madam*, *Mack and Mabel*, *The Music Man*, *They're Playing our Song*, *Carousel*, *Oklahoma!*, *Camelot*, *Little Me*, *Follies*, *Promises Promises*, and *GYPSY*.

Guy was Musical Supervisor and Orchestrator of *A Funny Thing Happened on the Way to the Forum* starring Geoffrey Rush. He was Musical Supervisor and Musical Director of the Australian production of *Love Never Dies* - the sequel to *The Phantom of the Opera*.

This production has been released on DVD by Universal Pictures.

His work on *The Phantom of the Opera* began in Australia in 1990 and has continued for over twenty years with productions in Auckland, Cape Town, Pretoria, Johannesburg, Shanghai, Taipei, Hong Kong, Brazil (in Portuguese), Manila, Bangkok, Singapore and Seoul where he produced 2 cast recordings in Korean. He has had a similar long association with *Miss Saigon* since the original production - conducting or supervising productions in Australia, Manila, Hong Kong, Singapore, Brazil, Seoul, The Netherlands and Japan. Other international productions include *Cats* (Australia, New Zealand), *Chicago* (Australia, Hong Kong) and *We Will Rock You* - the QUEEN musical (Australia, Japan)

Other productions in Australia include *Les Miserables*, *Cabaret*, *My Fair Lady*, *Company*, *Into the Woods*, *Little Shop of Horrors*, *Best Little Whorehouse in Texas*, *West Side Story*, *Pirates of Penzance*, *Snoopy*, *Seesaw*, *Zorba*. Other Musical Direction work has included the UK Pop / Opera group *Amici Forever*, *The Helpmann Awards*, *The Music of Andrew Lloyd Webber and David Campbell - The Broadway Show*.

His next project is *Dirty Rotten Scoundrels* in Sydney followed by concert performances of *Do You Hear the People Sing* in Shanghai.

CREATIVE TEAM



ANDREW HALLSWORTH - CHOREOGRAPHER

Andrew's recent choreographic credits include *Shane Warne The Musical*, *A Funny Thing Happened on the Way to the Forum*, the world premiere musical *An Officer and A Gentleman*, Melbourne Theatre Company's productions of *Next to Normal*, *Hamlet* and *The Drowsy Chaperone* and as Co-Choreographer of the Broadway production of *Priscilla Queen of the Desert*.

For The Production Company, he has co-directed and choreographed *The Producers* and *Anything Goes* with other choreographic credits including *The Boy From Oz*, *Carousel*, *Mame* and *The Boy Friend*. Also for The Production Company he co-choreographed *The Music Man* and *Bye Bye Birdie* with Ross Coleman.

Further choreographic credits include the original Australian production of *Eurobeat - Almost Eurovision*, which was revived for the Edinburgh Festival, West End and UK tour, *Menopause - the Musical*, *Leader of the Pack - The Ellie Greenwich Musical* (Betty Pounder Green Room Award winner for Best Choreography), *Sideshow Alley*, *The Merry Widow* for Melbourne City Opera, *Wombat Stew* and *Prodigal*. Live Events and cabaret shows include *Todd McKenney - The Songs and Stories of Peter Allen*, *Doris Day-So Much More Than The Girl Next Door*, *Tegrity*, *Newley Discovered*

Andrew's television credits include Channel Ten's drama series *Mr & Mrs Murder*, *So You Think You Can Dance Australia*, "Indigeridoo" and "Ja'ime's Assembly Routine" on the cult TV show *We Can Be Heroes*, *Dead Gorgeous* for ABC/BBC TV and *The Librarians* for the ABC.



TIM CHAPPEL - COSTUME DESIGNER

Tim won an Academy Award (Oscar), British Academy of Film and Television Arts (BAFTA) award and Australian Film Institute award (AFI) for his costume design for the feature film *The Adventures of Priscilla Queen of the Desert*. He revisited this work in *Priscilla Queen of the Desert, The Musical* which has been performed in Sydney, Melbourne, New Zealand, Canada, London, USA, Italy and Brazil. The Australian version of *Priscilla, Queen of the Desert The Musical* won Tim the 2007 Helpmann Award for Costume Design and the 2008 Green Room Award for Best

Costume. International productions have won him the 2010 Laurence Olivier Award for Best Costume design, the 2011 Tony Award for Best Costume Design in a Musical, the 2011 Outer Critics Circle Award for Outstanding Costume Design for a Play or Musical, the 2011 Drama Desk Award for Outstanding Costume Design as well as the 2010 Broadwayworld.com Toronto award for Best Original Costume Design. After the success of *The Adventures of Priscilla Queen of the Desert*, Tim spent many years designing for feature films, television and music video clips in the USA.

Feature film credits include *Today You Die*, *Lovewrecked*, *Miss Congeniality*, *Into the Sun*, *Red Riding Hood*, and *Mighty Morphin Power Rangers* amongst others. His television credits include *V.I.P.*, *High Society* and *Kathy and Mo* as well as a number of music video clips for popular artists such as *Missy Elliott*, *Cher* and *Matchbox 20*. Since returning to Australia, Tim designed the encore presentation of *The Sapphires* produced by Black Swan Theatre Company and Company B; consulted for a new children's TV series and lectured in costume design at the Australian Film Television and Radio school. Tim designed costumes for PJ Hogan's latest film *Mental* and costumes for the new television series *I Will Survive* for Channel 10 and Fremantle Media Australia. Time has designed for some of Australia's most loved stars including Casey Donovan for *The Deadlys (2012)* and Trevor Ashley's *Diamonds Are For Trevor* as part of the 2012 Mardi Gras Festival.

CREATIVE TEAM



ADAM GARDNIR - SET DESIGNER

GYPSEY is Adam's third set design for The Production Company. He has designed the sets for *The Producers* and *Anything Goes*. Other musical designs include *Moonshadow*, *Virgins* and *Love Never Dies* (as Associate Designer).

In other arenas, Adam has designed several productions for Victorian Opera, Malthouse, Belvoir, MTC, STC and The Australian Ballet. Adam has been nominated for seven Green Room Awards, winning in 2011 with the opera *Angelique*.

A 2003 graduate from the Victorian College of the Arts, Adam has received scholarships from the VCA and Malthouse. In 2012 he was appointed to the board of the Midsumma Festival where he produced the world premier of *Gaybies*. Adam hopes you enjoy *GYPSEY*, one of the greatest musicals ever written.

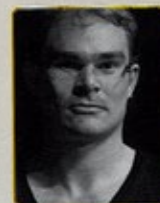


PAUL JACKSON - LIGHTING DESIGNER

Paul is an Associate Artist at Malthouse Theatre. He has designed lighting for The Australian Ballet, The Royal New Zealand Ballet, Melbourne Theatre Company, West Australian Ballet, Victorian Opera, West Australian Opera, Sydney Theatre Company, Bell Shakespeare, Playbox, Malthouse, Belvoir Street, Ballet Lab, Lucy Guerin, World of Wearable Art New Zealand, La Mama, not yet it's difficult performance group, Chamber Made Opera, and many others. Paul's work has featured in festivals in Asia, Europe and the United Kingdom and he has lectured

in design at the University of Melbourne, RMIT University and Victorian College of the Arts.

Paul has received a number of Green Room Awards and nominations for design, as well as receiving the 2012 Helpmann Award for lighting design. He was named in The Bulletin's Smart 100 for 2004 and was the Gilbert Spottiswood Churchill Fellow for 2007.



ROBERT CUDDON - LIGHTING DESIGNER

Rob is an Australian based lighting designer and lighting programmer. As a programmer, he works with Australia's leading designers on projects from major musicals to large scale fashion events, both in Australia and overseas. He was the programmer for *Hot Shoe Shuffle*, *The Addams Family Musical*, *Jersey Boys*, *A Funny Thing Happened On The Way To The Forum*, *Hairspray (Sydney)*, *Rock Of Ages*, *Barry Gibb Mythology* Australian tour and *World of Wearable Art (NZ)*. He has programmed innumerable Australian Ballet and Opera Australia projects. He

also supports many overseas and touring artists who perform in Melbourne.

A designer in his own right, particularly for dance, Rob was the co-lighting designer for The Production Company's *Chess* and *The Producers*. Rob was the associate lighting designer for The Production Company's *The Boy From Oz*, and has relit many shows for the Australian Ballet.



SYSTEM SOUND - SOUND DESIGN

MANAGING DIRECTOR - JOHN SCANDRETT

SOUND DESIGN ASSOCIATES - JOHN SCANDRETT, MARK BENSON & DAVID TONION

The System Sound team has engineered many productions throughout Australasia including *Les Miserables*, *The Phantom of the Opera*, *Mamma Mia!*, *Spamalot*, *The Producers*, *We Will Rock You*, *Guys & Dolls*, *Billy Elliot*, *Rock of Ages*, *Love Never Dies*, *Jersey Boys* and currently *Wicked*, *Chitty Chitty Bang Bang*, *War Horse*, *Legally Blonde* and *King Kong*.

MARK BENSON

Mark has been an Associate Sound Designer for most of The Production Company musicals. He has engineered many shows, and concerts with *The Australian Philharmonic* and *Hong Kong Philharmonic Orchestras* and others and engineered events such as the Hong Kong Handover and Concert, *Jose Carreras at Angkor Wat*, and *Mahler's Symphony of a Thousand* and the exhibition buildings.

DAVID TONION

With a Bachelor of Music (Sonology), David was engaged by System Sound for the Australian Premiere of *Miss Saigon*. He has since been involved in numbers other productions including *West Side Story*, *Sweet Charity*, *The Boy from Oz*, *Popcorn*, *Cats*, *Miss Saigon*, *Oliver*, *We Will Rock You*, *Guys & Dolls*, *Billy Elliot*, and was the Associate Sound Designer for *Miss Saigon*, *Anything Goes*, *Kismet*, *Mary Poppins* and *Chess*.



THE
PRODUCTION
COMPANY

ERNST & YOUNG
Quality in Everything We Do

A NEW VERSION OF
GILBERT AND SULLIVAN'S

The Pirates of Penzance

BRENT HILL • GARETH KEEGAN
WAYNE SCOTT KERMOND • GENEVIEVE LEMON
CLAIRE LYON • ADAM MURPHY

30 OCT - 3 NOV • ARTS CENTRE MELBOURNE, HAMER HALL

THEPRODUCTIONCOMPANY.COM.AU



CREATIVE TEAM



EMMA CALLAGHAN - ASSISTANT DIRECTOR / MYER FOUNDATION RESIDENT

Emma is honoured to be awarded the position of Myer Foundation Resident for 2013. She is thrilled to be assisting Gale Edwards after working with her on the Green Room awarding winning production of *Chess*. Most recently Emma was a production assistant to the creative team on *King Kong The Musical*. Prior to this she was the Assistant Director to Roger Hodgman on The Production Company's award winning *Grey Gardens*. Emma's production company SpeCo produced *She Loves Me* at the Newtown Theatre Sydney. She also wrote, produced and performed the musical *LUV* at the Stables Theatre Sydney. Her performing credits include *Thoroughly Modern Millie*, *Les Miserables*, *Miss Saigon*, *Cats The Musical*, *Joseph and The Amazing Technicolor Dreamcoat*, *The Buddy Holly Story*, *Wedding Song*, *Devine Metropolis*, *The Hunting of the Snark*, *Earth Song*, *Evita*, *Chess* and *The Wizard of Oz*. Emma's television credits include *Blue Heelers*, *Stingers*, *Police Rescue* and *Big Sky*, *Good Morning Australia*, *The Midday Show*, *Hey Hey It's Saturday* and *CNN Live*.



NATALIE GILHOME - ASSISTANT CHOREOGRAPHER

Natalie has been involved in numerous theatrical productions in Australia, Asia, Europe and most recently New York, where she was based for the last seven years.

She was Associate Choreographer for the Australian tours of *The Secret Garden*, *Man of La Mancha*, *South Pacific*, *The Sound of Music* and *The Full Monty*. Her performance credits also include *Fiddler On The Roof*, *The Wizard of Oz* and the European tour of *Cats*. Most recently Natalie joined *Priscilla Queen of the Desert* as Associate Choreographer for international productions, including Italy and Brazil. Natalie is thrilled to return to The Production Company after performing in their previous productions of *She Loves Me*, *Mack and Mabel*, *Anything Goes*, *How to Succeed in Business Without Really Trying* and *Annie Get Your Gun*.

CRAIG RENSHAW - ASSISTANT MUSICAL DIRECTOR

Craig Renshaw was Musical Director for *Kiss of the Spider Woman*, *Girl Crazy*, *No Way to Treat a Lady*, *The Rocky Horror Show*, *Side by Side by Sondheim* and regional productions of many shows including *CHESS*, *Jesus Christ Superstar*, *Oklahoma!* and *The Sound of Music*. He was Associate Conductor of *Cats*, *The Phantom of the Opera*, *The Pirates of Penzance*. Other musical theatre work includes *Annie*, *Disney's Beauty and the Beast*, *Grease*, *Love Never Dies*, *Mamma Mia!*, *Miss Saigon*, *Oliver!*, *Wicked* and *Zorba!*. On television Craig was seen as a musician on *Australian Idol*, *The Midday Show*, *Today*, *X Factor* and has accompanied major artists like Michael Ball, Susan Boyle, Peter Cousins, Lorna Luft. On the concert platform Mr Renshaw has conducted the Australian Pops, Canberra Symphony, Queensland Pops and Sydney International Orchestra and is active as an arranger and orchestrator. This is Craig's debut with The Production Company and is happy to be working with his mentor, Guy Simpson. Craig would like to thank his family for their love and support and hopes you will enjoy this performance.

THANK YOU

Frank Van Straten OAM for the program article • Colin Page and Jeff Busby for photography
Tia Clark • Jacob Gibson • Le Pointe Dance Shop • Rose Chong Costumes

The Production Company is most grateful for the generous support and assistance of our Patrons

- William & Denise Abbott
Maurice & Helen Alter - Pacific Shopping Centres P/L
Isaiah Ambrose
Bruce Armstrong & Assoc. Pty Ltd
John & Rosemary Barr
Judy Becher
Linda Bruce & Alan Tootell
Ita Buttrose AO, OBE
Terry Campbell AO & Christine Campbell
Maria Casalbuono & Tania De Carli
Robert Cavaggion & David Freeman
Chef's Hat Australia Pty Ltd
Shani Cossins
Tony & Mandy Coyne & Family
Brendan & Kerrin Danaher
Brian M. Davis
Margaret & John Dickman
Matt & Lina Duckworth
Geoffrey & Brynne Edelsten
Jeff & Jenny Egan
EKA Chemicals Australia Pty Ltd
Nola E Finn
Mrs Susan Fry
Raphael & Fiona Geminder & Family
Peter & Judith Gipps
Alan & Rachel Goldberg
John & Marg Goodall
Alan & Wendy Guest of Guest Nominees Pty Ltd
Matt & Clare Handbury
Paula & Jack Hansky
Brian J. Hurlock
Dr Alastair Jackson
Christopher Jackson
David A. Jackson
Mrs Amy Jasper
Mr Paul Jasper
Judy Johnstone
Mrs Merle Joseph
Coral Knowles
Geraldine Lazarus & Greig Gailey
Rosie & Solomon Lew & Family
John & Erin Lidgerwood
Eve Mahlab AO
Mike McGuire
Robert & Nicole McIntosh
Mal McKenzie
Robert & Victoria McLellan
In memory of David McMullan
Dr Mark & Dr Alla Medownick
- Roslyn & Tom Morris
Dr Chris Moss
Mrs Joan Muir
Donald Murray
Dr Flaviana Nervo-Benedetti
Dr Michael & Pearl Nissen
Barry Novy & Family
Genevieve Nunan
Diane & Glen Orwin
Jenny & Stuart Packer - Airtron Services Pty Ltd
A. J. Potter
John Prescott AC & Jennifer Prescott
Quest Clocktower on Lygon Apartments
Gina (Georgia) Rentziz
Syd & Sara Robenstone
K.M. Rodda
Lois Roffey
Jan Rogers
Mrs Ina Rose
RR Partners
Sala Rubinstein & Israel Rosenfield
Vince & Kelly Sabatino
Alfredo & Mirella Salera
Michael Sassella
Max & Jill Schultz
Max & Ziva Shavitsky
Gerard Sheehan & Children
Gary Singer & Geoffrey Smith
The Jack & Robert Smorgan Families Foundation
Mrs Margery Snowball
Ezekiel Solomon
The Spencely Family
The Sunraysia Foundation
Eva Sweet
Dr Susan Trainor
Michael Troy
Nevenka Tucker
Peter Varagiannis & Aphrodite Mandikos
Leon & Sandra Velik
Village Roadshow Limited
Alex & Heloise Waislitz & Family
Ruth Waislitz
Nathan & Nechama Werdiger
Paul Wheelton OAM
Brian Robert Wilson
Dr Peter Wyllie Johnston
Helen M. Yorston
Aaron Zachariusz
Anonymous (5)



THE
PRODUCTION
COMPANY

ANZ 

WHAT A GLORIOUS FEELIN'
I'M HAPPY AGAIN!

SINGIN'
IN THE
RAIN



ROHAN BROWNE • ALINTA CHIDZEY
MATT LEE • CHRISTIE WHELAN-BROWNE

21-25 AUGUST

ARTS CENTRE MELBOURNE, STATE THEATRE

.....
THEPRODUCTIONCOMPANY.COM.AU