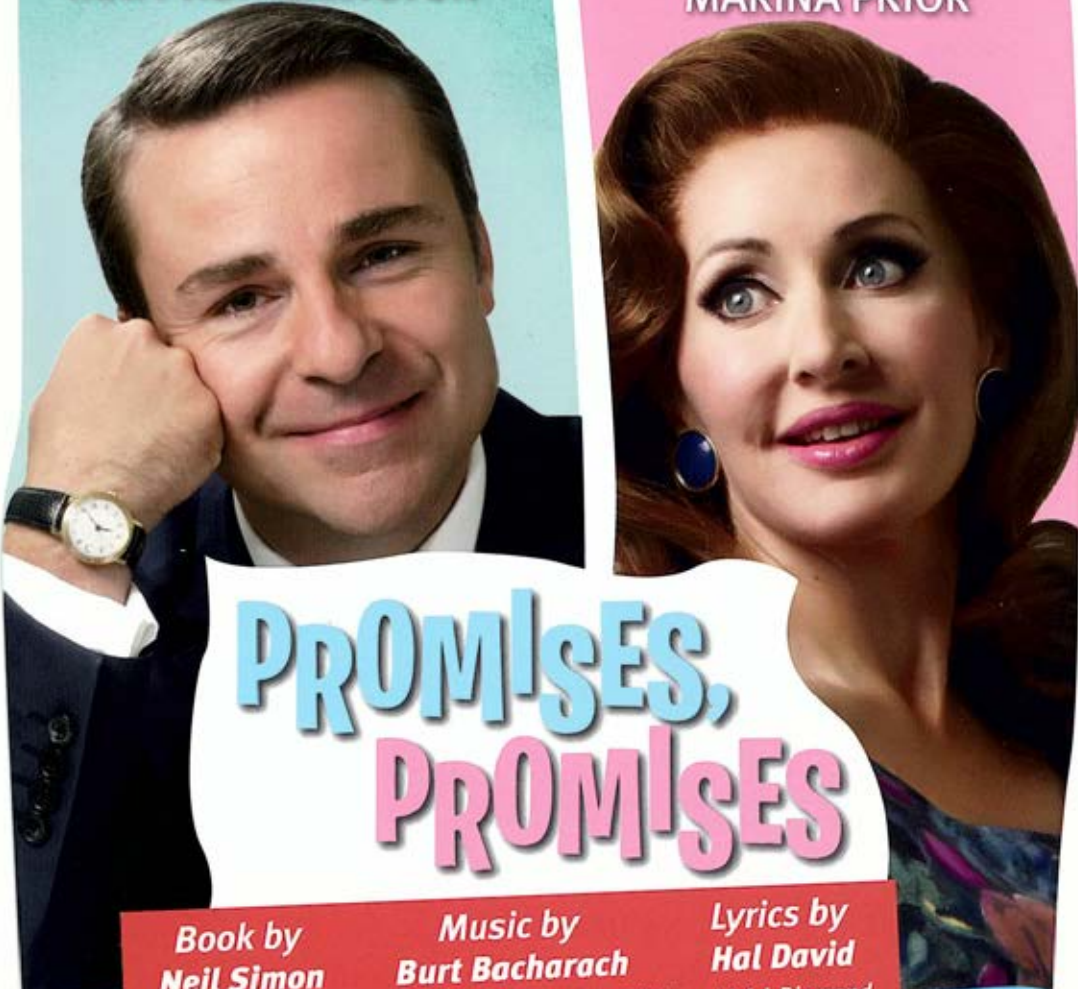


OUR NEXT SHOW

MATT HETHERINGTON

MARINA PRIOR



# PROMISES, PROMISES

Book by **Neil Simon**      Music by **Burt Bacharach**      Lyrics by **Hal David**

Based on the screenplay "The Apartment" by Billy Wilder and I.A.L. Diamond

Director **NADIA TASS**    Musical Director **GUY SIMPSON**    Choreography **TANYA MITFORD**    Costumes **ISAAC LUMMIS**    Set **ANDREW BELLCHAMBERS**

**3 to 7 OCTOBER • 6 SHOWS ONLY**

**Arts Centre Melbourne – State Theatre**

Book online [artscentremelbourne.com.au](http://artscentremelbourne.com.au) or call 1300 182 183



**ERNST & YOUNG**

Quality In Everything We Do

PRESENTS

# CHESS

THE MUSICAL



Season 2012

ARTS CENTRE MELBOURNE – STATE THEATRE



THE PRODUCTION COMPANY  
GRATEFULLY APPRECIATES



PRINCIPAL SPONSOR



SERIES SPONSORS



SUPPORTING SPONSORS



DOMAIN FLOWERS



We are most grateful for the generous support and assistance of

**OUR FOUNDATION SPONSORS**

Kevin and Colleen Bamford  
John and Janet Calvert-Jones  
Campbell and Krystyna Campbell-Pretty  
Henry and Esther Goldberg  
Gil and Sandi Hoskins  
Garry Krauss AM and Pru Krauss

David and Sue Langdon  
Bill and Elaine Montague  
Ray Montague  
Dame Elisabeth Murdoch AC DBE  
Michael and Atida Naphtali & Jane and Andrew Fairley  
Dr Tim and Mrs Trish Pitt  
Lady Potter AC

THE PRODUCTION COMPANY  
**CHESS**  
THE MUSICAL

Music by  
**Benny Andersson  
and Björn Ulvaeus**

Lyrics by  
**Tim Rice**  
Based on an idea by Tim Rice

By arrangement with Three Knights Limited  
The Shubert Organisation Inc and Robert Fox Limited

SILVIE PALADINO MARTIN CREWES SIMON GLEESON MICHAEL FALZON  
ALINTA CHIDZEY MARK DICKINSON BERT LABONTE

JESSICA ARMSTRONG  
RACHEL COLE  
JILLIAN GREEN  
CRYSTAL HEGEDIS  
TURANGA MERITO  
JOEL PARNIS  
COLLIN MACKENZIE POOLE  
ESTHER STEPHENS

DAVE BURROWS  
ANTHONY COSTANZO  
DANNY GOLDING  
RAELENE ISBESTER  
JESSICA MORTLOCK  
ANTHONY PEPE  
JAMES SHANNON  
CAMERON THOMAS

MATT WARD

MADELINE CAIN  
NELSON GARDNER  
TYLER HAWKINS  
ROSA MCCARTY  
CHRIS OSTRENSKI  
JORDAN POLLARD  
CATHERINE SHEPHERD  
DEAN VINCE

WEI WEI ZHANG

Director  
Musical Director  
Choreographer  
Set Designer  
Costume Designer  
Lighting Designers  
Sound Design  
Sound Associates

Stage Manager  
Repetiteur  
Assistant to the Director

GALE EDWARDS  
DAVID PIPER  
TONY BARTUCCIO  
SHAUN GURTON  
KRYSTAL GIDDINGS  
PAUL JACKSON and ROBERT CUDDON  
SYSTEM SOUND  
PETER GRUBB, MARK BENSON, DAVID TONION  
for SYSTEM SOUND  
DARREN KOWACKI  
MICHAEL TYACK  
EMMA CALLAGHAN



ARTS CENTRE MELBOURNE, STATE THEATRE,  
AUGUST 18 to AUGUST 26, 2012





Chairman  
Artistic Director  
Executive Director  
Hon. Company Secretary  
Hon. Treasurer  
Directors

**Jeanne Pratt AC**  
**Ken Mackenzie-Forbes AM**  
**Rachel D Taylor**  
**Don Maloney**  
**Keith Beecher OAM** Sponsorship & Subscriptions  
Development Manager  
**Leanne Russell**  
**Deborah Beale** Technical Director  
**David Miller**  
**Felicity Beale**  
**Mark Gogoll**  
**John Hay-Mackenzie** Marketing: ACMN Pty Ltd  
**Caryn Cavanagh**  
**Garry Krauss AM** **Celia Pavelieff**  
**Ross Mollison**  
**Chris Gibbons** Publicity: CAVANAGH PR **Julie Cavanagh**

PA to Jeanne Pratt AC



#### THE ARTS CENTRE

PO Box 7585, St Kilda Road, Melbourne Vic 8004  
Telephone: (03) 9281 8000 Facsimile: (03) 9281 8282  
Website: artscentremelbourne.com.au

#### VICTORIAN ARTS CENTRE TRUST

**Ms Janet Whiting (President)**  
**Ms Deborah Beale**  
**Ms Terry Bracks**  
**Mr Julian Clarke**  
**Ms Catherine McClements**  
**Mr Graham Smorgon**  
**Prof Leon van Schaik AO**  
**Mr David Vigo**

#### Executive Group

**Ms Judith Isherwood** Chief Executive  
**Mr Andy Avery** Interim Executive, Visitor & Commercial Businesses  
**Mr Tim Brinkman** Performing Arts  
**Mr Michael Burns** Facilities & Asset Management  
**Ms Louise Georgeson** General Manager – Development,  
Corporate Communications & Special Events

Arts Centre Melbourne gratefully acknowledges the support of its donors through Arts Centre Melbourne Foundation Annual Giving Appeal.

#### FOR YOUR INFORMATION

• The management reserves the right to add, withdraw or substitute artists and to vary the programme as necessary.

- The Trust reserves the right of refusing admission.
- Cameras, tape recorders, paging machines, video recorders and mobile telephones must not be operated in the venue.
- In the interests of public health, Arts Centre Melbourne is a smoke-free area.

The Production Company thanks Frank van Straten OAM for his program article and Jeff Busby and Colin Page for their photography.

## WELCOME TO CHESS

A musical about a board game? As anyone who is obsessed with the game of *CHESS* knows, it is so much more than that. This is an imagined history and background to the fascinating years of the cold war. Our young audiences will have to check out Bobby Fischer and Boris Spassky on their favourite search engines. Their famous match once symbolised so much.

I am so delighted with the production team and cast we have brought together. Gale Edwards, Tony Bartuccio and Shaun Gurton are three of the people I admire most in show business. Welcome to our new costume designer Krystal Giddings. I hope this is the first of many engagements with us. Paul Jackson and Robert Cuddon have just lit our beautiful season of *The Producers* and John Scandrett and his team at System Sound have made sure you have heard every word and note of all our shows for the last fourteen years. I believe Gale has delivered the best production of *CHESS* ever.

I am always so proud of the talent displayed by our casts. Silvie Paladino and Bert LaBonte are favourites with our audiences. Welcome, to what I hope is the first of many roles with us, to Alinta Chidzey, Michael Falzon and Simon Gleeson and welcome back Mark Dickinson. Welcome home to the familiar names I see in the ensemble and I look forward to meeting the new talent we have discovered in our auditions. How gratifying to see that Orchestra Victoria and our company are back in the talented hands of our Musical Director David Piper. It is also remarkable that another one of Australia's great musical directors Michael Tyack has been our rehearsal pianist and is playing the first keyboard in the orchestra.

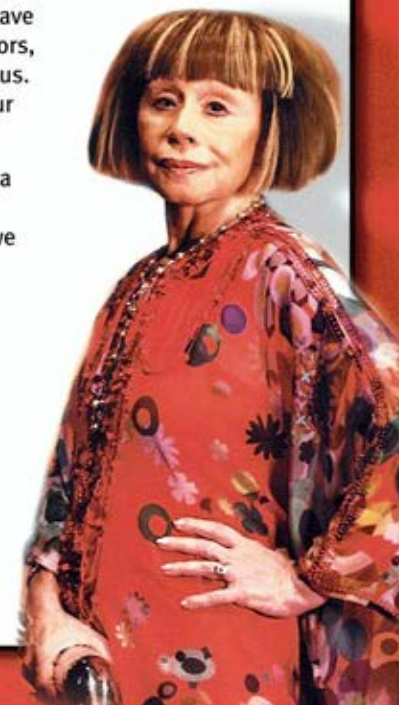
It is again a great pleasure to thank our valued sponsor Ernst & Young and to thank all our Sponsors and Patrons. We were all advised in our last show, *The Producers*, never to put our own money into a show. I have never taken that advice and I am so grateful that our sponsors, donors and patrons haven't either and continue to support us. Your names are listed in this program as a small token of our appreciation. We couldn't do this without you.

So many of you tell me how much you appreciate receiving a free program. I feel it helps so much with the enjoyment of our shows. This is just another way of showing how much we appreciate you, our audience.

Our *CHESS* pieces are all in position. Let the game begin!

**Jeanne Pratt AC**  
CHAIRMAN  
THE PRODUCTION COMPANY

JOIN OUR MAILING LIST  
[THEPRODUCTIONCOMPANY.COM.AU](http://THEPRODUCTIONCOMPANY.COM.AU)







## Silvie Paladino

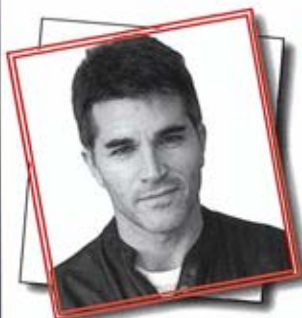
### Florence Vassy

Silvie has established herself as one of Australia's most versatile and talented entertainers. Her first theatrical role was Eponine in the Australasian tour of *Les Misérables*. She was then invited to perform the same role on the West End in the London production. In 1997, Silvie was invited to return to London where she performed the role of Fantine in *Les Misérables* for a successful two-year season.

Silvie's other Australasian credits include Jeannie in *Hair*, Grizabella in the Australian and Asian tour of *Cats*, Ellen in Cameron Mackintosh's Australian premiere of *Miss Saigon*, Donna in the smash hit *Mamma Mia!*, Rita in the world premiere of *Sideshow Alley* and Lady Thiang in The Production Company's *The King And I*.

Silvie has appeared in concert as guest solo artist with Australia's leading orchestras and has also toured with Patrizio Buanne and performed with celebrated theatre composer Stephen Schwartz. Silvie is also well known to Australian audiences through her performances at special events and regular television appearances including *Carols by Candlelight*.

Silvie's recordings include *Silvie Paladino Sings Streisand* (a live recording of her one-woman show for which she was nominated for a Green Room Award) and *Silvie Paladino – Christmas List*. Her new solo *On My Own*, was released in May 2011.



## Martin Crewes

### Frederick Trumper

Martin is a graduate of the WAAPA. He began his career in Australia appearing in *Aspects of Love*, *West Side Story*, *South Pacific* and *Joseph and the Amazing Technicolor Dreamcoat*. In 1996, he played Marius in the International Touring Production of *Les Misérables* and then on the West End in 1997.

In the UK, Martin appeared on stage as Dino in The Orange Tree Theatre production of *The Rink*, Joey Evans in The Chichester Festival Theatre production of *Pal Joey* and originated the role of Walter Hartright in Andrew Lloyd Webber's *The Woman In White*,

directed by Trevor Nunn. He also performed opposite Dame Judi Dench in the Royal Shakespeare Company's production of *Merry Wives The Musical* at Stratford upon Avon.

Back in Australia, Martin was seen as Rik, the barman in *Oh! What A Night* (Helpmann Award nomination), Claude in The Production Company's *Hair* (Greenroom Award), Jim Ryan "The Man" in David Atkins' *The Man From Snow River Arena Spectacular* (Greenroom Award nomination), and most recently as Pasha/Strelnikov in *Dr Zhivago* (Helpmann Award Nomination).

Martin performed the Opening Number of the Royal Variety Performance in 2000. He sang the role of Marius in the Scandinavian Concert Tour of *Les Misérables* in 2002 and has performed in concerts throughout Europe, Australia and New Zealand.

Martin's television appearances include *Neighbours*, *Dream Team*, *Daylight Robbery*, *Bad Girls*, *The Grand*, *Heartbeat*, *Casualty*, *Tough Nuts* and *Crownies*. He has appeared on film in *D.O.A.*, *Santa Rita* and as Chad Kaplan in *Resident Evil*.



## Simon Gleeson

### Anatoly Sergievsky

Since Simon graduated from WAAPA in 1998, he has performed in many major musicals including *Les Misérables* (Australasian 10th Anniversary Production), *Jolson*, *Shout*, *Mamma Mia!* (Helpmann Award nomination) and as Sean Flynn in *Eureka* under the direction of Gale Edwards. He was also a part of the Sydney Theatre's opening productions of *Harbour* and *The Republic of Myopia* for the Sydney Theatre Company.

Simon headed to London and continued his professional association with Gale Edwards appearing as Walter in the world premiere of *The Far Pavilions* in the West End (Whatsonstage nomination). His other UK theatre credits include the world premiere of *Imagine This* in the West End, *Three Sides*, *The Silver Lake*, the Edinburgh Festival season of *Certified Male* and *Shoes* for Sadler's Wells. The highlight of this time was starring as Angus in *Southwark Fair* for the Royal National Theatre, working with famed director, Sir Nicholas Hytner.

Simon's film and television credits in Australia include *City Homicide*, *Neighbours*, *Blue Heelers* and *Seachange*. In London he played the regular role of Sid in *EastEnders* (BBC 1) and was a member of the principal cast of *Kombat Opera* (BBC 2) directed by Monty Python member, Terry Jones. Simon played the role of Ken in the feature film *My Life In Ruins* opposite Richard Dreyfuss and Nia Vardalos.

Most recently Simon played Raoul in the original Australian production of Andrew Lloyd Webber's *Love Never Dies* (Helpmann Award nomination).



## Michael Falzon

### The Arbiter

Michael made his stage debut in *The Pirates of Penzance* (Opera Queensland) in 1994. His early career saw him appear in many productions including *HMS Pinafore*, *Hello, Dolly!* (GFO) and *Joseph and the Amazing Technicolor Dreamcoat* (RUG). Michael's breakthrough role came as Galileo in Queen's *We Will Rock You* (Michael Coppel), the first production to be directed by it's author, Ben Elton. He also played the role in Japan, before being invited to star again in the recent UK and European tour.

His varied career has seen him perform in STC's *The Wharf Revue*; in concert with SSO and ASO; in *Side By Side by Sondheim* (Theatre Royal; touring from next month) and in a sold-out solo show at Sydney's The Basement. Other credits include The Artilleryman in Jeff Wayne's 2007 arena-hit *The War of the Worlds* – through which he released his first CD (available on iTunes) – touring again in the Europe/UK concerts of 2010 and in the upcoming 2012/13 tour; Homer in *Floyd Collins*; the title role in *Hedwig and the Angry Inch* (QPAC & Showtune); opposite Rachael Beck in Adam Gwon's *Ordinary Days* (Squabbalagic) and as Stacey Jaxx in *Rock of Ages* (Newtheatricals).

Visit Michael at [michaelfalzon.com](http://michaelfalzon.com) and on Facebook.





## Alinta Chidzey

### Svetlana Sergievskaya

Alinta's recent screen credits include the American telemovie *The Frontier* for Sony and the forthcoming ABC series *The Dr Blake Mysteries*.

Alinta's theatre credits include the role of Anita in *West Side Story*, for which she was nominated for a Helpmann Award, Green Room Award, Sydney Theatre Award, two GLUGS Awards as Best Supporting Actress and was awarded the Australian Dance Award for Most Outstanding Performance.

Other credits include Mickey in *Leader of the Pack* (Green Room Award for Best featured ensemble), *The Music of Andrew Lloyd Webber*, *Jesus Christ Superstar*, Demeter in *Cats*, *Dusty The Original Pop Diva!*, *Mamma Mia!* and *Dirty Dancing* in The Netherlands.

Alinta has been training at The Howard Fine Acting Studio Australia and is forever grateful for their teachings. A special thanks to Vocal Coach Tim Smith.

Do what you love and love what you do!



## Mark Dickinson

### Alexander Molokov

Mark has just returned from London, where he appeared in numerous shows, including *Irving Berlin's White Christmas*, Disney's *High School Musical*, (original UK) *The Drowsy Chaperone* (original West End) and *Les Miserables* with a performance at Windsor Castle for the Royal Family.

Australian credits include *tick, tick... BOOM!* as Jon, *Cats* as Gus, *Mack and Mabel* (The Production Company) as Mr. Fox, *A Funny Thing Happened On The Way To The Forum* as Miles Gloriosus and

Australian premieres of *Sunset Boulevard* and *Beauty and the Beast*.

Australian film and television credits include *Ned*, *South Pacific*, *The Damnation of Harvey McHugh*, *The Music of Andrew Lloyd Webber - Masterpiece* in Beijing, singing *Love Changes Everything*.

Mark dedicates his performance to his daughter Sian and the memory of his mum Sue.



## Bert LaBonte

### Walter de Coursey

Bert's theatre credits include *Elling*, *Clybourne Park*, *Next to Normal*, *A Behanding in Spokane*, *Richard III*, *The Hypocrite*, *Don Juan in Soho*, *The Madwoman of Chailot*, *Tom Foolery*, and *A Female of the Species* for MTC, *The Grenade* for STC, *25th Annual Putnam County Spelling Bee* (nomination for Helpmann Award) MTC/STC, *Much Ado About Nothing* and *A Midsummer Night's Dream* for Essential Theatre and *The Inner Sanctum* for La Mama.

Musical theatre credits include *An Officer and a Gentleman* for GFO, *Kismet* for The Production Company, *Pippin* for Kookaburra, *The Full Monty* for IMG, *Jesus Christ Superstar* for the RUG UK tour, *Show Boat* for Marriner/Livent and *Guys and Dolls* for Shows Management.

For Adelaide Cabaret Festival he performed in *Songs for a New World* by Jason Robert Brown and *A Wild Party* by Andrew Lipka. In 2011 Bert performed his critically acclaimed one man show *When I Fall in Love; the Nat King Cole Story* written by Ross Mueller.

Film credits include *Animal Kingdom*, *Nightmares and Dreamscapes*, *Rats and Cats*, *Evil Never Dies*, *Salem's Lot*, *The Cook* and *The Pugilist at Rest!*

Television credits include *SeaPatrol IV*, *Wilfred II*, *Lowdown*, *Neighbours*, *Good Guys Bad Guys*, *Blue Heelers*, *Simone De Beauvoir's Babies*, *Backberner*, *Flipper*, *City Homicide*, *Bogan Pride* and *Pirate Island :The Lost Treasure of Fiji*.





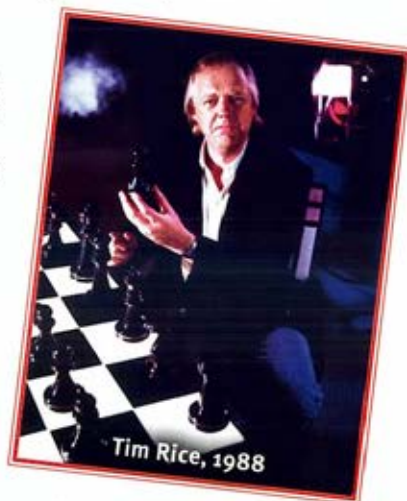
## VARIATIONS – THE STORY OF CHESS

### Frank Van Straten tracks the chequered history of a unique musical

Back in 1979, when Tim Rice came up with the idea of a musical about chess, many people thought the idea refreshingly novel. It wasn't. In fact, chess has found its way into most areas of the performing arts. Just a few of the most interesting examples are *Ballet des Échecs*, performed for King Louis XIV of France in 1607; Traugott Eberwein's 1810 opera *Das Schachturnier* (*The Chess Tournament*); the classic 1926 French film *Le Joueur d'échecs* (*The Chess Player*); Sir Arthur Bliss's ballet *Checkmate*, in which Sir Robert Helpmann danced as the Red King, first in 1937, again in 1971, and finally at the State Theatre in Melbourne in 1986 – his last stage appearance. And opera-goers with long memories still fulminate on 21-year-old Jim Sharman's 1967 interpretation of *Don Giovanni*, with the action played out on a giant chess board.

In 1979 Rice was 35. With Andrew Lloyd Webber he'd created three ground-breaking musicals, *Joseph and the Amazing Technicolor Dreamcoat* (1968), *Jesus Christ Superstar* (1971) and *Evita* (1978). Following their success, Rice invited Lloyd Webber to collaborate with him on a musical that explored the human aspects of the effects of the Cold War, set against the drama of an international chess tournament, echoing the celebrated tussle between American Bobby Fischer and the USSR world champion Boris Spassky. Lloyd Webber, however, was busy working on *Cats*; moreover, their relationship swiftly soured after Lloyd Webber discarded the lyrics that Rice had written for *Cats*' iconic song, *Memory*.

Rice developed his idea into a synopsis in 1980. The following year Broadway producer Richard Vos suggested Rice approach Benny Andersson and Björn Ulvaeus, who were looking to break away from their ABBA confines. Tim met Benny and Björn in Sweden in December 1981. They discussed several ideas, but it was the *CHESS* project that they settled on. Almost a year later, when all four members of ABBA were in London celebrating their first ten years, Andersson and Ulvaeus announced that they were working with Rice on *CHESS*. At the same time, Rice was busy collaborating with opera composer Stephen Oliver on the musical *Blondel*. It opened in the West End in 1983, and achieved a respectable run.



The first of *CHESS*'s many manifestations was a concept album – a testing-the-water technique

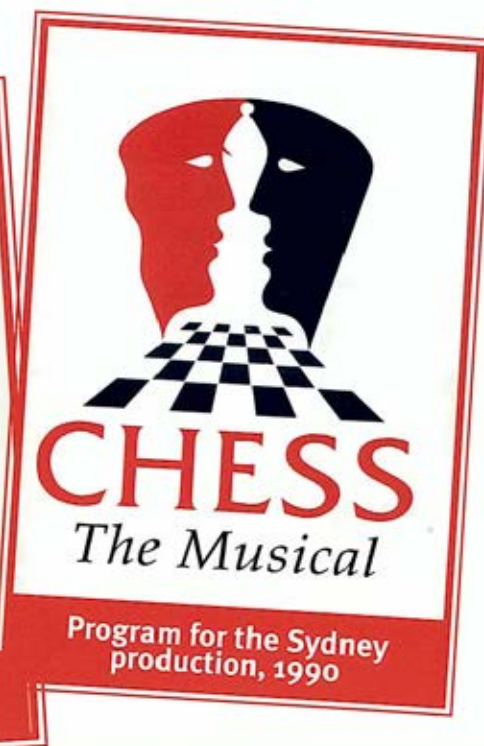
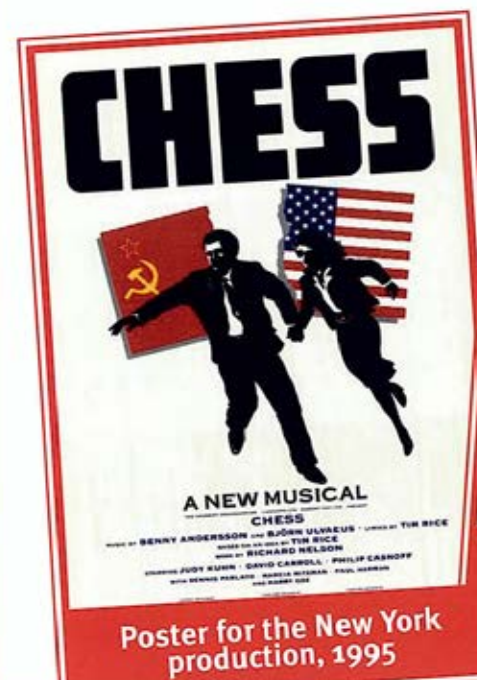


employed for *Jesus Christ Superstar* and *Evita*, and in Australia in 1974 for Reg Livermore's *Ned Kelly* (produced in 1977). The *CHESS* album was recorded at Andersson and Ulvaeus' Polar Studios in Stockholm, Sweden, towards the end of 1984. The producers were Three Knights Ltd – actually Rice, Andersson and Ulvaeus. The cast included Elaine Paige (Florence), Barbara Dickson (Svetlana), Tommy Körberg (The Russian), Murray Head (The American), Björn Skifs (The Arbiter) and Denis Quilley (Molokov). Two of the numbers, *One Night in Bangkok* and *I Know Him So Well*, raced up the charts, while the album cast toured Europe with a concert version of the show.

Songs from *CHESS* were a highlight of *An Evening with Tim Rice and Friends* which New Zealand promoters Stewart and Tricia Macpherson's Stetson Productions toured through Australia and New Zealand in December 1985. With Rice were Elaine Paige, Tommy Körberg and musical director Andrew Powell.

*CHESS* finally reached the West End on 14 May 1986, but only after a particularly harrowing production process, in which the book was rewritten and expanded, and the original director, Michael Bennet, was replaced by Trevor Nunn. Elaine Paige, Tommy Körberg and Murray Head reprised their roles from the concept album; prior commitments meant Barbara Dickson had to bow out, so Svetlana was played by Siobhán McCarthy. Melbourne actor Kevin Colson was cast as the CIA agent, Walter de Courcey.

The reviews were mostly enthusiastic. *The Daily Telegraph* thought it was 'gift-wrapped and gorgeous...compels admiration,' and *The Times* said, 'It turns out to be a fine piece of work that shows the dinosaur mega-musical evolving into an intelligent form of life.'



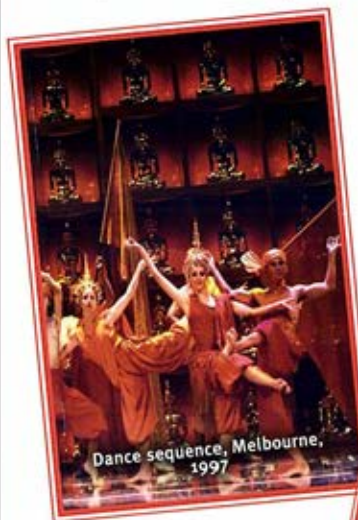


After a great London run – just a few days short of three solid years – hopes were high for *CHESSE* on Broadway. At Trevor Nunn's insistence the show was completely reworked. There were new sets, new characters, drastic changes to the plot, and the original 'sung through' approach was discarded; and when Elaine Paige, the only recruit from the London production, objected to her character of Florence being changed from British to American, she was replaced by Judy Kuhn.

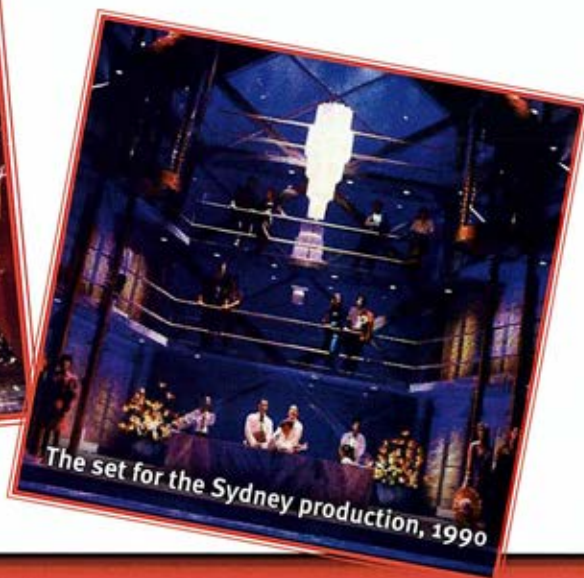
*CHESSE* opened on Broadway on 28 April 1988, after a series of previews, the first of which ran for four hours, including a 90-minute interval, thanks to a recalcitrant set. The reviews were mixed and the show closed after only 68 performances. In January 1989 Judy Kuhn, Tommy Körberg and Murray Head presented a concert version of *CHESSE* in Skellefteå, Sweden during the finals of the 1989 World Cup chess tournament.

The Australian rights to the show were acquired by Kevin Earle, the former chief executive of the Adelaide Festival Centre Trust. Earle had been executive producer for the Australian productions of *Cats* and *Starlight Express*. His plans to open his production of *CHESSE* at Her Majesty's in Melbourne were swiftly abandoned when the MLC Theatre Royal Company in Sydney came on board as a major investor – but only if the show could premiere at their newly refurbished Royal in Sydney. Earle undertook to raise \$1 million of the show's \$3 million budget. His production team included Brian Thomson (sets), Tess Schofield (costumes), Michael Tyack (musical director) and Jim Sharman (director). Jodie Gillies starred as Florence, with David McLeod as the American, Robbie Krupski as the Russian, Maria Mercedes as Svetlana and John Wood as Molokov. Laurence Clifford, David Whitney, Dean Lotherington and Delia Hannah had featured roles. A major reworking had the action take place entirely in Bangkok (the original had been split between Italy and Thailand), while the story was hastily updated to acknowledge the collapse of the Soviet Union.

Regrettably, this version recycled most of the material Tim Rice had prepared for the New York production, but which had been abandoned. Tragedy struck on 22 November 1989. With rehearsals underway and tickets on sale, Kevin Earle died from a massive heart attack. He had raised only



Dance sequence, Melbourne, 1997



The set for the Sydney production, 1990

\$100,000, meaning the theatre had to find the rest. On 3 February 1990 the curtain rose on a production that looked splendid, but was burdened by a virtually meaningless book. *CHESSE* ran for five months, racking up a loss of \$3.25 million dollars – at that stage the biggest loss in Australian theatre history.

This was not enough to deter producers Stewart and Tricia Macpherson, who had presented *An Evening with Tim Rice and Friends* back in 1985. In 1992 they toured a further revision of *CHESSE* to four New Zealand cities. Murray Head, Tommy Körberg, Linda-May Brewer and Christian Hughes were imported to play Frederick, Anatoly, Svetlana and The Arbiter, with Delia Hannah (Florence) and David Weatherley (Molokov).

The New Zealand success encouraged Macphersons to restage the show in Australia in 1997. The New Zealand production team included designer John Parker, musical director Anthony Gabrielle and director Colin McColl. Barbara Dickson came from London to make her *CHESSE* stage debut as Florence. The other leads were Daryl Braithwaite (Frederick), Derek Metzger (Anatoly), Delia Hannah (Svetlana), David Weatherley (Molokov), Tim Page (Walter) and Keith Wright (The Arbiter).

The show opened at the Princess in Melbourne on 19 February 1997.

Unfortunately, *CHESSE* had to compete with a trio of very popular shows – *Sweet Charity*, *Sunset Boulevard* and the Melbourne Theatre Company's *A Little Night Music*. Inevitably, *CHESSE* was checkmated. It closed after only three weeks, leaving the Princess free to host a transfer of *A Little Night Music*. Producer Stewart Macpherson was devastated. 'A show of this scale needs more support than it got,' he said, adding bravely that his plans to stage *Jekyll and Hyde – The Musical Thriller* at Her Majesty's in October would not be affected – a hope that, sadly, was not fulfilled.

Like the game it so compellingly celebrates, *CHESSE* has always been an extraordinary challenge. Nevertheless, because of the quality of its music and the intrigues inherent in its story-line, it continues to be produced around the world in fully staged and concert versions. Its score includes some of music theatre's best-loved songs.

As the brilliant German *CHESSE* champion Emanuel Lasker put it many years ago: 'Without error, there can be no brilliancy'.

©Frank van Straten OAM



Barbara Dickson and Derek Metzger, Melbourne, 1997



David Weatherley and Barbara Dickson, Melbourne, 1997



OVERTURE  
PROLOGUE  
ACT ONE  
Merano, Italy

## MUSICAL NUMBERS

The Story of <i>CHESS</i>	Ensemble
Merano	Ensemble
Heaven Help My Heart	Florence
Press Conference	Frederick, Florence & Ensemble
Anatoly & Molokov	Anatoly, Molokov & KGB Agents
Where I Want To Be	Anatoly
Diplomats	Molokov & de Courcey
The Arbiter	Arbiter & Ensemble
Hymn	Arbiter & Ensemble
The Merchandisers	Arbiter & Ensemble
<i>CHESS</i> Game 1	
A Model of Decorum and Tranquillity (Quartet)	Florence, Anatoly, Molokov & Arbiter
Florence and Molokov	Florence & Molokov
1956 Budapest is Rising	Florence, Frederick & Ensemble
Nobody's Side	Florence, Arbiter & Ensemble
The Mountain Duet	Florence & Anatoly
<i>CHESS</i> Game 2	Dancers & Ensemble
Florence Quits	Frederick & Florence
Anatoly and the Press Anthem	Anatoly & Ensemble
Anatoly	Anatoly
Golden Bangkok	Dancers
One Night in Bangkok	Frederick & Ensemble
One More Opponent	Anatoly & Florence
You and I	Anatoly & Florence
The Soviet Machine	Molokov, KGB Agents & Ensemble
Interview	Walter, Frederick, Anatoly & Ensemble
Someone Else's Story	Svetlana
Where I Want To Be (Reprise)	Svetlana & Anatoly
The Deal	Arbiter, Molokov, Svetlana, Anatoly, Florence, Walter & Frederick
Pity The Child	Frederick
I Know Him So Well	Florence & Svetlana
Talking Chess	Frederick & Anatoly
End Game	Molokov, Florence, Svetlana, Anatoly, Walter & Ensemble
You and I (reprise)	Florence & Anatoly
Walter and Florence	Walter & Florence
Epilogue	Florence & Ensemble

ACT TWO  
Bangkok, Thailand

## CAST

(IN ORDER OF APPEARANCE)

Frederick Trumper, American Grandmaster	MARTIN CREWES
Florence Vassy, Frederick's lover/second	SILVIE PALADINO
Anatoly Sergievsky, Russian Grandmaster	SIMON GLEESON
Arbiter	MICHAEL FALZON
Alexander Molokov, Head of the Russian Delegation	MARK DICKINSON
Svetlana Sergievskaya	ALINTA CHIDZEY
Walter de Courcey, Head of the American Delegation	BERT LABONTE

Citizens of Merano, Reporters, Delegates, Civil Servants

JESSICA ARMSTRONG	DAVE BURROWS	MADELINE CAIN	RACHEL COLE
ANTHONY COSTANZO	NELSON GARDNER	JILLIAN GREEN	DANNY GOLDING
TYLER HAWKINS	CRYSTAL HEGEDIS	RAELENE ISBESTER	ROSA MCCARTY
TURANGA MERITO	JESSICA MORTLOCK	CHRIS OSTRENSKI	JOEL PARNIS
ANTHONY PEPE	JORDAN POLLARD	COLLIN POOLE	JAMES SHANNON
CATHERINE SHEPHERD	ESTHER STEPHENS	CAMERON THOMAS	DEAN VINCE
	MATT WARD	WEI WEI ZHANG	







Violins	<b>Matthew Hassall</b> <b>Claire Tyrell</b> <b>Tim Veldman</b> <b>Kirsty Greig</b>	Horn	<b>Anton Schroeder</b>
		Trumpets	<b>Dan Beasy</b> <b>Greg Spence</b> <b>Tristan Rebien</b> <b>Ian Bell</b>
Cellos	<b>Kalina Krusteva</b> <b>Alison Both</b>	Trombones	<b>Simon Rock Scerri</b> <b>John Paine</b>
Bass	<b>James Kempster</b>	Electric Guitar	<b>Darryn Farrugia</b>
Flute	<b>Judith Carpenter</b>	Drums	<b>Greg Sully</b>
Oboe	<b>Vivienne Brooke</b>	Percussion	<b>Michael Tyack</b>
Clarinets	<b>Robert Henry</b> <b>Grania Burke</b> <b>Stuart Byrne - Reed</b> <b>Hugh Ponnuthurai</b>	Keyboards	<b>Andrew Patterson</b> <b>Lochan Mackenzie-Spencer</b>
Bassoon			

**ORCHESTRA VICTORIA – INSPIRING VICTORIANS THROUGH MUSIC.**

Orchestra Victoria makes a significant and valuable contribution to the vibrant cultural identity of our State. This year Orchestra Victoria launched its OVation Season delivering a programme of artistic excellence. Based in Melbourne, Orchestra Victoria works in partnership with Australia's premier arts companies delivering outstanding performances with The Australian Ballet, Opera Australia, Victorian Opera and The Production Company. The Orchestra also has a strong commitment to taking orchestral music to audiences around the State and performing in both metropolitan and regional Victoria. Our hugely successful and popular education program *On The mOve* sees the orchestra reach out to communities both large and small all over the State as we harness the enthusiasm and talent of a new generation of musicians at both primary and secondary levels. A live orchestra makes all the difference, creating energy and uplifting audiences through music. As a flexible performer with a large repertoire from baroque music to contemporary composers and musicals, the Orchestra is committed to innovative programming and showcasing distinguished guest artists, conductors and the musicians of tomorrow.

**PRODUCTION CREDITS**

Technical Director	<b>David Miller</b>
Stage Manager	<b>Darren Kowacki</b>
Company Manager	<b>Adam J Lowe</b>
Production Manager	<b>Mel Robertson</b>
Repetiteur	<b>Michael Tyack</b>
Assistant Company Manager	<b>Tom Lambert</b>
Assistant Stage Manager	<b>Ashlee Hints</b>
Assistant Stage Manager, rehearsals	<b>Jacob Gibson</b>
Wardrobe Supervisor	<b>Michelle McNally</b>
Head of Wardrobe	<b>Melinda Brodie</b>
Wigs/Hair	<b>Gay Gallacher</b> <b>Kim Tavares</b>
Sound Mix Engineer	<b>David Tonion</b>

Stage Sound Technicians	<b>Melissa Panettiere</b> <b>Jackson Scandrett</b>
Radio Mic Engineer	<b>David Tonion</b>
Set Construction	<b>Malthouse</b>
Lighting Equipment	<b>PRG</b>
<b>SECONDMENTS</b>	
Stage Management	<b>Olivia Benson (NIDA)</b> <b>Chloe Woodman (VCA)</b> <b>Luke Hales (Box Hill TAFE)</b>
Company Management	

Thank you  
VCA  
NICA



**Jessica Armstrong**

Originally from New Zealand, Jessica moved to Melbourne to study at the Victorian College of the Arts and recently graduated with a Bachelor of Music Theatre. Whilst at the VCA, Jessica appeared as Francesca in *West Side Story* and Jeanne in excerpts from *Hair*. Since graduating, Jessica has been taking acting classes with Kim Farrant at 16th Street Actors Studio and continues to study voice with Rosemarie Harris.

Jessica is thrilled to be making her professional debut in *CHESSE* and would like to thank her parents and husband for their continuous support.



**Dave Burrows**

Dave graduated from WAAPA in 2008 where his performance highlight was playing Jud Fry in *Oklahoma!* Professional credits include Opera Australia's *Lady Macbeth of Mtsenk* and *Aida*, Crown Casino as the lead singer in *Twelve Days of Christmas*, *Scooby Doo Live!*, *The New Black* (Auspicious Arts Projects workshop) and most recently, touring as Captain Feathersword for The Wiggles. After performing in *Kismet* in The Production Company's 2011 season, he is excited to be back at the State Theatre in *CHESSE*.

Dave would like to dedicate this season to his Nan.



**Madeline Cain**

Madeline graduated in 2002 from the Central Queensland Conservatorium of Music. Her roles there included Gladys in *The Pajama Game*, Maria in *The Sound of Music* and *CHESSE*. Since graduating, she has been a lead singer on board the Pacific Princess, soloist in *Encore!* (Tokyo Disney Sea) and has appeared as Jellylorum in *Cats* (Really Useful Group) and in *Jekyll and Hyde* (TML Enterprises). Madeline performed in the Australian premiere of Georgia Stitt's *Alphabet City Song Cycle* and last year, was honoured to perform with Georgia Stitt and John Bucchino as part of their Australian concert series. *CHESSE* marks Madeline's first appearance with The Production Company.



**Rachel Cole**

Rachel recently graduated from ED5 International in Sydney. Her credits as an actor/dancer with Opera Australia include *La Boheme*, *The Love of the Nightingale*, *The Marriage of Figaro* and *Die Tote Stadt*. She toured with Brainstorm Productions in 2010. Rachel has also performed backing vocals for James Morrison Ginspoon (Homebake) and was a grand-finalist in the Australian Cabaret Competition. She also holds a degree in Psychology from the University of Sydney.

*CHESSE* marks Rachel's first appearance with The Production Company. She owes special thanks to William Forsythe for teaching her the craft, friends and family for support and God for everything else.





## Anthony Costanzo

Anthony studied piano and composition from the age of six. He furthered his skills at Monash University, majoring in classical piano and musical theatre. His professional performance career has spanned well over ten years, both nationally and internationally. Theatre credits include *The Music of Andrew Lloyd Webber – Masterpiece*, *Pinocchio*, *The Witches of Eastwick*, *Cats* (world tour/Asian tour), *We Will Rock You* (Asian tour), *Seriously – The Petshop Boys Reinterpreted* (Melbourne, UK), *Wicked*

(Australian tour), *Into The Woods* (Rob Guest Endowment) and the Albury production of *Strange Bedfellows*.

For The Production Company, Anthony has performed in *How To Succeed In Business Without Really Trying*, *Mack and Mabel*, *Hair* and *Thoroughly Modern Millie*. Anthony has worked as a vocalist for Royal Caribbean, Walt Disney Special Events, Dracula's Cabaret Restaurant, Ansett Australia, Moomba Ski Show, Melbourne Cup and the NBA. Film and television credits include *The Wog Boy*, *Good Friday Appeal 2000/2002*, *The Singing Office*, *Carols by Candlelight* and *Carols in the Domain*.



## Nelson Gardner

Nelson is a recent graduate of the Victorian College of the Arts, where he completed a Bachelor Degree of Music Theatre. During his study there he appeared in *Dreamsong*, *City of Angels* and *West Side Story*, as well as self-devised projects and excerpts from *Carousel*. Nelson's last professional performance was in *Dreamsong*, funded by the Carnegie 18 program at Arts Centre Melbourne, Fairfax Studio.

Nelson has eight years' experience in classical voice technique and is currently studying voice with Adam Lyon.

*CHESS* is Nelson's second show with *The Production Company* and he is thrilled to be a part of it. He'd like to thank his family for their love and support.



## Jillian Green

Jillian trained in Tasmania before moving to Victoria to complete her Diploma at Dance Factory. She made her professional musical theatre debut as an original cast member in *We Will Rock You*, touring throughout Australia and Japan. Jillian's credits include *Wicked* (Universal Studios Japan), Hugh Jackman's *The Boy From Oz*, *Cash Train* and *The Wiggles Shows*. Jillian has also worked on *Billy Elliot*, *Mary Poppins*, *Love*

*Never Dies* and recently *Moonshadow*. She has performed in a number of corporate performances and featured in television commercials. Jillian is thrilled to be part of *CHESS*, her debut with the Production Company.



## Danny Golding

Danny completed his training at the Adelaide Centre for the Arts. In 2005 he commenced work with the Australian Dance Theatre under esteemed choreographer Garry Stewart. He toured extensively, performing in *Debolution*, *The Age Of Unbeauty*, *Held* and *Ignition*. In 2007 Danny joined Royal Caribbean Productions and later returned to Australia to earn a place in *So You Think You Can Dance*, making the top twelve. Danny has worked with various artists including Sam Sparrow, Ricki-Lee Coulter,

Darren Hayes, Anthony Callea, Cassie Davis and Rozalla. He is now completing his Advanced Diploma at NICA, specialising in aerials and swinging pole.



## Tyler Hawkins

A graduate of the VCA, Tyler has had an extensive career in the Australian dance industry as a performer, choreographer and Artistic Associate. He was a founding member of 2ndToe Dance Collective.

Performance credits include *It Sounds Silly* for Chunky Move, *With the Lot* for Lucy Guerin Inc. and *Private Parking*, *Adam Turns 26* and *Something Blew* for 2ndToe Dance Collective. Most recently, Tyler was seen in *Fifteen*

for Liesel Zink as part of the Next Wave Festival. The show returns for a Brisbane season next month. Tyler has been involved in the development of many new works including Chunky Move's *Assembly*, Jo Lloyd's *Future Perfect* and 2ndToe's *The Family Series*.



## Crystal Hegedis

Crystal graduated from the NIDA in 2006. Since then she has toured extensively throughout Australia, New Zealand and the UK with Christine Dunstan Productions' critically acclaimed show *The Gruffalo* and later continued touring with *The Gruffalo's Child*.

Crystal's recent theatre credits include playing the role of Milli in Monkey Baa Theatre Companies *Milli*, *Jack* and *The Dancing Cat*, *Turtle* in the

Ensemble Theatres production of *A Year With Frog and Toad* and Fraulein Kost in the New Theatre's *Cabaret*. She also enjoys performing regularly with a Hungarian folk band and dance ensemble. Crystal is extremely delighted to be making her first appearance with The Production Company in *CHESS*.



## Raelene Isbester

Raelene is a Music Theatre graduate from Central Queensland Conservatorium of Music. Her credits include *Eurobeat - Almost Eurovision*, *Call Girl the Musical*, Tokyo Disneyland, *The Music of Georgia Stitt* and the lead role for the workshop production of *Pink* for Stephen Schwartz. Her screen credits include roles on *Blue Heelers* and *Neighbours*. Recently, in London, she performed regularly with the West End Gospel Choir and the vintage group Elle & the Pocket Belles. She currently performs around Melbourne in the cabaret group *Los Nachos Trios*. *CHESS* is Raelene's first show with The Production Company and she is thrilled to be part of such a wonderful cast.





## Rosa McCarty

*CHES* is Rosa's first appearance with The Production Company and her professional debut. Rosa performed in original and cover rock bands for many years before making the transition to musical theatre. Her previous theatre credits include Nancy in *Oliver!*, Rose Vibert in *Aspects of Love*, Dusty in *Dusty - The Original Pop Diva*, Aurora/Spiderwoman in the Victorian premiere of *Kiss of The Spiderwoman*, Aldonza/Dulcinea in *Man of La Mancha*, Ellen in *Miss Saigon*, and Fantine in *Les Miserables*. Rosa would like to thank The Production Company for this wonderful opportunity, and Clare, Douglas, Gavin, and vocal coach Julian Bailey for their continuing support.



## Turanga Merito

Born and raised in Rotorua, New Zealand, Turanga is thrilled to be making his debut with The Production Company. His theatre credits include the role of Simba in Disney's *The Lion King* in Sydney, Melbourne and China, Chad in Disney's *High School Musical Live on Stage* and most recently, the role of Chino in the Australian Tour of *West Side Story*.

Turanga enjoys a busy schedule of vocal and dance tuition in Melbourne.

He would like to thank the Merito, O'Donnell, Toward, and Active Artists Management families for their unconditional love and support and dedicate his performance to all his students and to Mitchell.



## Jessica Mortlock

Jessica completed full-time training at APO Arts Academy in 2010, graduating with a Diploma of Dance and Certificate III in Musical Theatre. Since then she has performed in Magnormos' Stephen Sondheim triptych, *Anyone Can Whistle* and worked on Jerry Herman Triptych, *Milk & Honey* as assistant choreographer. Jessica has been a company member of Vertical Shadows Contemporary Company for the past two years, most recently as principle dancer in *On the Rocks*.

*CHES* is Jessica's professional debut and she is delighted to have the opportunity to work with The Production Company. She would especially like to thank her mum and dad for their endless support and contribution to her career.



## Chris Ostrenski

Originally from North Queensland, Chris began ballroom dancing and performing at the age of thirteen. He graduated from the Victorian College of the Arts with a Bachelor of Arts (Music Theatre) in 2011, where he performed various excerpts from *Hair* and *Company*. Roles include the tenor role in the angel city quartet in *City of Angels* and Action in *West Side Story*. Chris is thrilled to be making his professional debut with The Production Company.

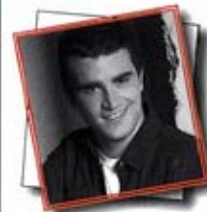


## Joel Parnis

In 2010, Joel graduated from the full-time musical theatre course at the University of Ballarat. Credits during his training include *Gypsy*, *The Life, Urinetown* and *Thoroughly Modern Millie*. Professional credits include Mowgli with The Australian Shakespeare Company's production of *The Jungle Book*, Barrett in the staged reading of *Titanic* directed by Graeme Russell and a year at Universal Studios Singapore, playing Phantom and Frankenstein in *Monster Rock*.

On screen, his credits include *IRAS Corporate Video*, *Diner* for Black&White Productions and the feature film *Charlotte's Web*.

Joel made his debut with The Production Company in *The Producers*. He would like to thank everyone at Ian White Management for all their guidance and support, his incredible singing teacher of six years, Constance Coward-Lemke, Narelle and Lindy from Curtain Call Performing Arts Ballarat for being the first people outside his family to believe in him and to his wonderful Mum, Dad, brothers and sister, all of whom he feels so blessed to call his family.



## Anthony Pepe

Anthony is a graduate from WAAPA, where his performances included Benny in *Rent*, Andy Lee in *42nd Street* and Matt Galloway in *The Laramie Project*. He made his professional debut in 2008, performing alongside stage legend Debbie Reynolds in *Irene In Concert* (Peach Productions).

In 2010 Anthony played the role of Will Parker in IAJ International's *Oklahoma!* For the Production Company he has appeared in *The Boy From Oz*, *Sugar*, *Anything Goes* and *The Producers*. He has also appeared on *Neighbours*.



## Jordan Pollard

Jordan holds a Certificate IV in Performing Arts, training at ED5 International, Sing Over King, Screenwise and The Actors Centre in Australia and in London.

Performance credits include *MTV Awards with Fergie*, *ARIAS*, *Australia's Next Top Model*, *Australian Idol*, *Australia's Got Talent* and *The X Factor*.

He has worked with Jess Mauboy, Guy Sebastian, Duffy, Paris Hilton and Timomatic. He has recently appeared in the movie *Goddess*. Theatre credits include *Candy Man* with Wayne Scott Kermond, *Guys and Dolls* (Ambassador Theatre Group) and *Big Deal/ Action/ Riff's Cover* in the recent Australian tour of *West Side Story*.







## Matt Ward

Matt graduated from NIDA in 2000. Since graduating he has spent most of his time abroad, studying and performing in New York and London. His stage credits include Tony in *West Side Story*, Joseph in *Joseph and the Amazing Technicolor Dreamcoat* and *Jekyll and Hyde*.

Most recently he starred in the world premiere of John Michael Howson and Peter Penne's musical *Pyjamas in Paradise*, directed by Tony Bartuccio.

Matt is thrilled to be making his debut with The Production Company and would like to thank his family and friends for their constant love and support.



## Wei Wei Zhang

Wei Wei graduated in 2003 from the Victorian College of Arts with a Bachelor of Dance and then in 2006 with a postgraduate Diploma in Classical Ballet Teaching. Her credits there include *Strict Boundaries*, *Esmeralda* in *The Hunchback of Notre Dame* and *Kwacko*. Since graduating she has appeared in *Tivoli* with the Sydney Dance Company, in *Wild Swans* with The Australian Ballet before joining The Australian production of *The Lion King*. In 2008 Wei Wei made her West End debut, also in *The Lion King*.

Wei Wei is also a teacher of classical ballet and contemporary classes at The Dance Factory and Melbourne School of Classical Dance.

*CHESS* marks Wei Wei's first appearance with The Production Company. She is thrilled to be working with Gale, David and Tony and wishes to thank her father and Ian White Management for their constant support.



## Gale Edwards

### Director

Gale has been directing all genres of theatre and opera nationally and internationally for over thirty years, her great love being the classics and musical theatre. She has directed for all Australia's state theatre companies, Opera Australia, Victoria State Opera, South Australian Opera Company, New Zealand International Festival of the Arts, English National Opera, Royal Shakespeare Company and Chichester Festival. She has won multiple awards for her directing including the Sydney Theatre Award for *Festen*, Helpmann Awards for *The Boy From Oz* and *Sweeney Todd*, Green

Room Awards for *The Boy From Oz* and *Manon Lescaut*, Sydney Theatre Critics' Awards for *Coriolanus*, *The Rover*, *The Glass Menagerie* and *Les Miserables*.

Gale directed a new production of *Jesus Christ Superstar*, which had seasons on the West End and on Broadway, receiving an International Emmy Award for best filmed video production. Other international work includes *Romeo and Juliet* for Chicago Shakespeare Theatre, *Macbeth* for Oregon Shakespeare Company, *Hamlet*, *Edward II*, *Titus Andronicus* and *Richard III* for Washington Shakespeare Company, *Far Pavilions* for Shaftsbury Theatre London, *Don Carlos* for Royal Shakespeare Company London transferring to BAM in New York, *The Taming of the Shrew* and *The White Devil* for the Royal Shakespeare Company, both transferring to the Barbican Theatre in London, *St Joan* for The Strand Theatre London and *Aspects of Love* for the Really Useful Company London.

Gale has directed many theatre productions in Australia, some highlights are *Coriolanus*, *The White Devil*, *The God of Carnage*, *Woman in Mind* and *Festen* for STC and *The Way of the World*, *Cat on a Hot Tin Roof*, *Hitchcock Blonde*, *M Butterfly* and *Uncle Vanya* for MTC. Gale directed the original production of *The Boy From Oz*, *Jerry Springer the Opera* for the Sydney Opera House and a new production of *The Rocky Horror Show*.

Her operas include *La Boheme*, *Der Rosenkavalier*, *Sweeney Todd*, *Manon Lescaut*, *The Magic Flute*, *Maria Stuarda* and *Katya Kabanava*.

In 2000, The Australian Government awarded Gale a Centenary Medal for 'Outstanding Service to Australian Society through the Arts'.



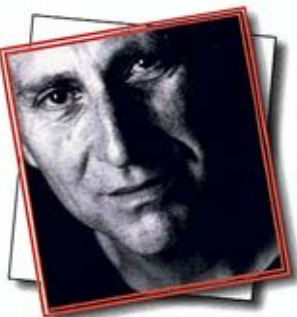


### **David Piper** **Musical Director**

David is a graduate of the University of Sydney, where he completed a Bachelor of Music, receiving a high distinction in piano performance. In 1991 he was a national finalist in the ABC Young Performers' Award, performing with the Queensland Symphony Orchestra.

David was recently Associate Musical Director on *Mary Poppins*. Prior to this, he spent two years working as Associate Musical Director on *Wicked*. He has worked as Musical Director for The Production Company on *The Boy Friend*, Assistant Musical Director for the original Australian production of *The Boy From Oz* and then Musical Director for its national tour and Assistant Musical Director on the arena production of the show starring Hugh Jackman. He was Assistant Musical Director on *Mamma Mia! We Will Rock You* (Australia and Japan), *Miss Saigon* and was Associate Musical Director on *Annie*.

As Assistant Musical Director, his credits also include *Crazy For You* and *Into The Woods*. As a répétiteur/vocal coach and pianist, he has worked on *Sunset Boulevard*, *Oklahoma! Call Me Madam*, *Aspects of Love*, *West Side Story*, *Scrooge The Musical*, *The Pirates of Penzance*, *Carmen Jones*, *Chicago* and *Show Boat* and for the ABC with the Tasmanian Symphony Orchestra. He has also worked as Musical Director for the Ballarat University Arts Academy and for Magnormos Productions on *A Bunch of Ratbags*, which was also recorded, *Archy and Mehitabel* and *The Beauty Spot*.



### **Tony Bartuccio** **Choreographer**

Tony has created choreography for virtually every aspect of the arts, positioning him at the forefront of his field. Amongst a host of career highlights, for theatre his work has received Sydney Drama Critics, Mo and Helpmann Awards for the many productions he has choreographed for Malthouse, Griffin, Belvoir, Black Swan, STC, MTC and commercial producers JC Williamson's, Conrad Jupiters, ICA, Crown Palladium and Palms and The Production Company.

His enormous body of work across the landscape of network television, film and corporate Australia has earned him the industry's Helpmanns, Logies and Penguins.

In addition to his work as Resident Choreographer and Creative Director for the Nine Network, Tony's choreography has recently been seen in the London season of *The Sapphires* (for Black Swan & Belvoir), the movie *A Heartbeat Away* directed by Gale Edwards and the world premiere of the new Australian musical *Paradise*.



### **Shaun Gurton** **Set Designer**

Shaun has designed nationally and internationally since 1973. From 1990 to 1994 he was associate Director/Designer for the State Theatre Company of South Australia.

Recent designs include the highly acclaimed productions of *Red*, *Hamlet*, and *Richard III* for MTC. Other designs for MTC include *The Heretic*, *Apologia*, *Moonlight and Magnolias*, *Scarlett O' Hara at the Crimson Parrot*, *King Lear* and *Inheritance*. He recently designed the national tour of *Yes, Prime Minister*. Other designs include *Diving For Pearls*, *Cosi* and *A Stretch of the Imagination* for Hit Productions, *Cheech and Romeo and Juliet* for Centaur Theatre in Montreal in Canada, *Secret Bridesmaids' Business* and *Talking Heads* for Kay McLean Productions, *Equus* and *Taking Liberty* for Perth Theatre Company.

For The Production Company, Shaun has designed *Sweet Charity*, *Dirty Rotten Scoundrels*, *The Boy From Oz* and *Sugar*.

Shaun has received Green Room Awards for *Steaming*, *Masterclass*, *Rivers of China*, *Festen* and *Richard III*. In 2004 he was presented with the John Truscott award for excellence in design. He has been nominated for the Helpmann award in design for *Inheritance* in 2004 and *King Lear* in 2005.



### **Krystal Giddings** **Costume Designer**

Krystal Giddings graduated from the Theatre Design course at NIDA in 2006.

As a costume and set designer, Krystal has worked for Darlinghurst Theatre Company, Downstairs, Belvoir Street Theatre and the Seymour Centre. Krystal has designed for television, theatre and film and last year, worked as the Costume Buyer on the Helpmann award winning Australian remake of Andrew Lloyd Webber's *Love Never Dies*.

Most recently Krystal assisted designer John Stoddart with his acclaimed production of *Die Tote State* at Opera Australia. She designed *The American Project* at ACA for Gale Edwards and is delighted to be working with her again.

This is Krystal's design debut with The Production Company.





**Paul Jackson**  
**Lighting Designer**

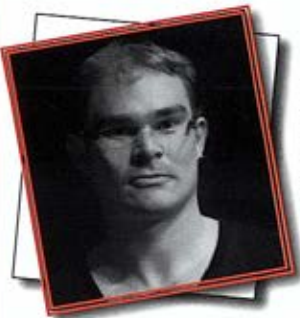
Paul is an Associate Artist at Malthouse Theatre and works for the Melbourne based firm *The Flaming Beacon*.

His design work for performance includes lighting designs for The Production Company, The Australian Ballet, Royal New Zealand Ballet, Melbourne Theatre Company, West Australian Ballet, Victorian Opera, West Australian Opera, Sydney Theatre Company, Playbox, Malthouse, Belvoir, Ballet Lab, Lucy Guerin, Black Swan, Melbourne Workers' Theatre, La Mama, not yet it's difficult performance group, Oz Opera, Chamber Made Opera, Griffin and many others.

Paul's work has been seen in festivals in Denmark, Germany, Austria, Korea, Slovenia, Taiwan, Hong Kong and the United Kingdom. He has lectured in design and associated studies at the University of Melbourne, RMIT University, NMIT and Victorian College of the Arts.

Paul has received a number of Victorian Green Room Awards and nominations for design, as well as multiple Helpmann and Sydney Theatre Award nominations.

He was named in the Arts and Entertainment section of The Bulletin's *Smart 100* for 2004 and was the Gilbert Spottiswood Churchill Fellow for 2007.



**Robert Cuddon**  
**Lighting Designer**

Rob is a Melbourne-based lighting designer, programmer and technician. As a programmer, he works with Australia's leading designers on projects from major musicals to large-scale fashion events, both in Australia and overseas. He was the programmer for *Hairspray* (Sydney), *Rock Of Ages* (Australia) and *Jersey Boys* and *World of Wearable Art* in New Zealand. He has programmed innumerable Australian Ballet and Opera Australia productions.

He also supports many overseas and touring artists who perform in Melbourne. A designer in his own right, particularly for dance, Rob is in demand as an Associate and Principal Lighting Designer. He was Associate Lighting Designer on The Production Company's *The Boy From Oz* and *The Producers*, relit *World of Wearable Art* at the Hong Kong Festival and has also relit many ballets for The Australian Ballet, including their recent production of *Swan Lake* in New York. Rob was the Associate Lighting Designer and Programmer for the *Victorian State School Spectacular* in 2011 and is the Lighting Designer for JACK Productions.



**SOUND DESIGN – SYSTEM SOUND**

**SOUND DESIGN ASSOCIATES PETER GRUBB,  
MARK BENSON DAVID TONION**

**Peter Grubb**

Peter designed *Follies*, *She Loves Me*, *Call Me Madam*, *They're Playing Our Song* and *Sunset Boulevard* for The Production Company. He has been Associate Sound Designer for *Les Miserables*, *Spamalot* and *Mamma Mia!* Sound Designer for *Cats*, *The Witches of Eastwick*, *Oliver*, *Avenue Q*, *Miss Saigon*, *Into The Woods*, *A Little Night Music*, *Sweet Charity*, *Little Shop of Horrors*, *Mary Poppins* and *Moonshadow*.

**Mark Benson**

Associate Sound Designer for more than twenty of The Production Company's musicals, Mark is responsible for the orchestral set-up and "miking" - he has engineered and mixed many concerts for the Melbourne Symphony Orchestra and The Australian and Hong Kong Philharmonic Orchestras.

**David Tonion**

Design Associate, David Tonion is responsible for the electronic design and programming and is also the live sound Mix-Engineer for *CHESS*. David was Associate Designer for *Grey Gardens*, *Miss Saigon*, *Moonshadow*, *Mary Poppins* and *The Mousetrap*.

**System Sound**

The System Sound team has engineered many productions throughout Australasia over the last 33 years including *Les Miserables*, *The Phantom of The Opera*, *Mamma Mia!*, *Spamalot*, *The Producers*, *We Will Rock You*, *Guys and Dolls*, *Billy Elliot*, *Rock of Ages*, *Love Never Dies* and currently *Jersey Boys*, *Wicked*, *A Chorus Line*, *Mary Poppins* and *Moonshadow*.





**Emma Callaghan**  
**Assistant to the Director**

Emma is currently the vocal and drama director for the Elite Squad at Patrick Studios Australia and vocal director at East Ivanhoe School of Dance. She produced *She Loves Me* at the Newtown Theatre in Sydney and wrote, produced and performed the musical *LUV* at the Stables Theatre. Emma was head touring chaperone on *Miss Saigon*, Head chaperone on *Priscilla Queen of the Desert* and Assistant Director for The Production Company's *Grey Gardens*.

Her performing credits include *Thoroughly Modern Millie*, *Les Miserables*, *Miss Saigon*, *Joseph and the Amazing Technicolor Dreamcoat*, *The Buddy Holly Story*, *The Wedding Song*, *Devine Metropolis*, *The Hunting of the Snark*, *Earth Song*, *Evita*, *CHESS* and *The Wizard of Oz*. Emma's television credits include *Blue Heelers*, *Stingers*, *Police Rescue*, *Big Sky*, *Good Morning Australia*, *The Midday Show*, *Hey Hey It's Saturday* and *CNN Live*.

ALBUM AVAILABLE NOW

silvie paladino  
on my own

"A hallmark of the recording is the sincerity and passion clearly evident in each track. This is clearly a labour of love from all involved."

- Theatre People

Featuring tracks such as *On My Own*, *Something Wonderful*, *Happy Days are Here Again* and *One Voice* accompanied by the Melbourne Youth Orchestra and conducted by John Foreman.

Silvie will be signing  
after the show  
(except Wednesday August 22)

Available from good music retailers and at The State Theatre. [www.abcmusic.com.au](http://www.abcmusic.com.au)

**The Production Company is most grateful for the generous support and assistance of our Patrons**

William & Denise Abbott  
Maurice & Helen Alter – Pacific Shopping Centres Australia Pty Ltd  
Isaiah Ambrose  
John & Rosemary Barr  
Linda Bruce & Alan Tootell  
Ita Buttrose AO, OBE  
Christine & Terry Campbell AO  
Maria Casalbuono & Tania De Carli  
Robert Cavaggon & David Freeman  
Tony & Mandy Coyne & Family  
Chef's Hat Australia Pty Ltd  
Brian M Davis  
Margaret & John Dickman  
Matt & Linda Duckworth  
Geoffrey & Brynne Edelsten  
Jeff & Jenny Egan  
EKA Chemicals Australia Pty Ltd  
Alison Fallon  
Nola E Finn  
Mrs Susan Fry  
Geraldine Lazarus & Greg Gailey  
Raphael & Fiona Geminder & Family  
Peter & Judith Gipps  
Rachel & Alan Goldberg  
Marg & John Goodall  
Alan & Wendy Guest Guest of Guest Nominees Pty Ltd  
Matt & Clare Handbury  
Paula & Jack Hansky  
Health Predictions  
Brian J Hurlock  
Dr Alastair Jackson  
Christopher Jackson  
David A Jackson  
Mrs Amy Jasper  
Mr Paul Jasper  
Mrs Merle Joseph  
Coral Knowles  
Grant & Judy Latta  
Rosie & Solomon Lew & Family  
Erin & John Lidgerwood  
M Lynch  
Eve Mahlab AO  
David Mandie AM OBE  
Bruce McBrien OAM  
Mike McGuire  
Mal McKenzie

Robert & Victoria McLellan  
In memory of David McMullan  
Dr Mark & Dr Alla Medownick  
Dr Chris Moss  
Mrs Joan Muir  
Donald Murray  
Dr Michael & Pearl Nissen  
Barry Novy & Family  
Genevieve Nunan  
Diane & Glen Orwin  
Jenny & Stuart Packer - JPack Productions  
John Prescott AC & Jennifer Prescott  
Quest Clocktower on Lygon Apartments  
Gina (Georgia) Rentzis  
Syd & Sara Robenstone  
K.M. Rodda  
Lois Roffey  
Jan Rogers  
Mrs Ina Rose  
Sala Rubinstein & Israel Rosenfield  
RR Partners  
Vince & Kelly Sabatino  
Alfredo & Mirella Salera  
Max & Jill Schultz  
Max & Ziva Shavitsky  
Gerard Sheehan & Children  
Gary Singer & Geoffrey Smith  
Jack & Robert Smorgon Families Foundation  
Mrs Margery Snowball  
Ezekiel Solomon  
Sonoco Australia Pty Ltd  
The Spencely Family  
The Sunraysia Foundation  
Eva Sweet  
Michael Troy  
Nevenka Tucker  
Leon & Sandra Velik  
Peter Varagiannis & Aphrodite Mandikos  
Village Roadshow Limited  
Alex & Heloise Waislitz and Family  
Ruth Waislitz  
Nathan & Nechama Werdiger  
Mrs Nancy Willmott  
Aaron Zachariusz  
Mr P Zoelfel – Frontline Human Resources  
Anonymous (1)